

Model 25/26-CRR Chain Driven Live Roller Conveyor (Roll-to-Roll Type)

CHAIN ROLLER

The heavy design of the 25/26-CRR allows it to be used for conveying higher load capacities such as loaded pallets and drums. Chain driven rollers make it ideal for conveying oily parts in bottling and steel industries.



Conveyor shown with optional floor supports

- ★ 15 Bed Widths
- ★ Center Drive
- ★ Reversible
- ★ Chain Driven Rollers
- ★ Adjustable HS-Type Floor Supports Available

SIZE TO ORDER	Conveying Surface	15 3/4"	17 3/4"	19 3/4"	21 3/4"	23 3/4"	27 3/4"	29 3/4"	33 3/4"	35 3/4"	39 3/4"	43 3/4"	47 3/4"	51 3/4"	57 3/4"	63 3/4"
Overall	Between Rail Width	19"	21"	23"	25"	27"	31"	33"	37"	39"	43"	47"	51"	55"	61"	67"
Length "A"	Overall Frame Width	22 1/4"	24 1/4"	26 1/4"	28 1/4"	30 1/4"	34 1/4"	36 1/4"	40 1/4"	42 1/4"	46 1/4"	50 1/4"	54 1/4"	58 1/4"	64 1/4"	70 1/4"
5'	WEIGHTS (Lbs.) Based on 5" Roller Centers	368	383	393	413	428	458	473	503	518	548	578	608	638	683	728
10'		638	666	694	721	749	804	832	887	915	970	1026	1081	1136	1219	1302
15'		908	949	990	1030	1071	1152	1193	1274	1315	1396	1478	1559	1640	1762	1884
20'		1178	1232	1285	1338	1392	1498	1552	1658	1712	1818	1925	2032	2138	2297	2458
25'		1448	1515	1581	1647	1714	1846	1913	2045	2112	2244	2377	2510	2642	2841	3040
30'		1718	1797	1876	1955	2034	2192	2271	2429	2508	2666	2824	2982	3140	3377	3614
40'		2258	2363	2468	2572	2677	2886	2991	3200	3305	3514	3724	3933	4142	4456	4770
50'		2798	2929	3059	3189	3320	3580	3711	3971	4102	4362	4623	4884	5144	5535	5926
60'		3338	3494	3650	3806	3962	4274	4430	4742	4898	5210	5522	5834	6146	6614	7082
70'		3878	4060	4242	4423	4605	4968	5150	5513	5695	6058	6422	6785	7148	7693	8238
80'		4428	4632	4836	5040	5244	5652	5856	6264	6468	6876	7284	7692	8100	8712	9324
90'		4938	5178	5418	5657	5897	6376	6616	7095	7335	7814	8294	8773	9252	9971	10690
100'		5478	5744	6009	6274	6540	7070	7336	7866	8132	8662	9193	9724	10254	11050	11846

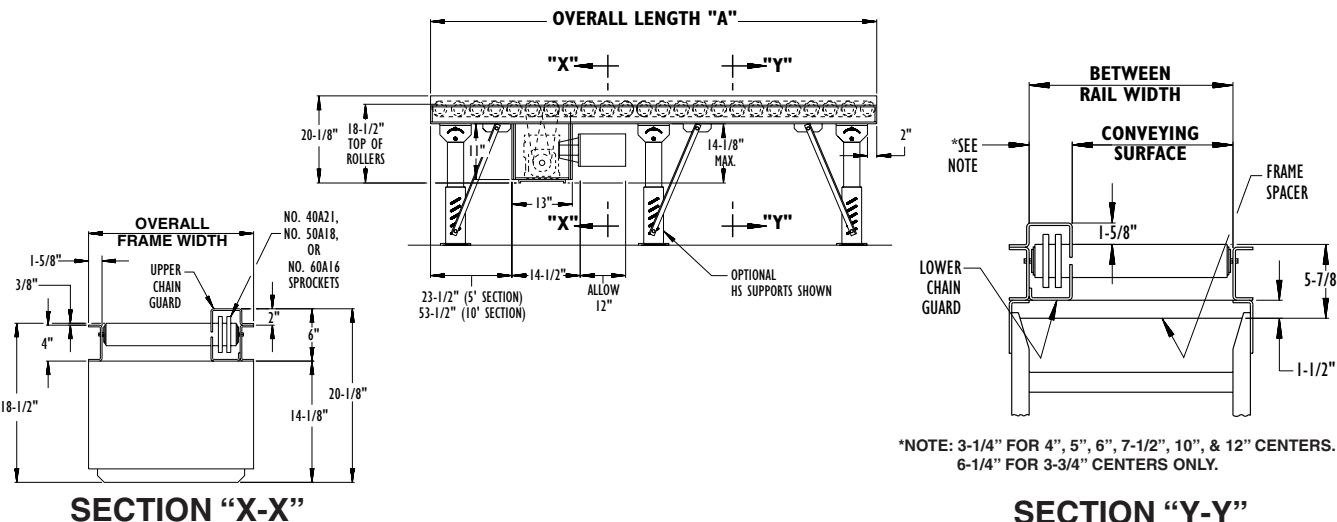
SIZE TO ORDER	Conveying Surface	15 3/4"	17 3/4"	19 3/4"	21 3/4"	23 3/4"	27 3/4"	29 3/4"	33 3/4"	35 3/4"	39 3/4"	43 3/4"	47 3/4"	51 3/4"	57 3/4"	63 3/4"
Overall	Between Rail Width	22"	24"	26"	28"	30"	34"	36"	40"	42"	46"	50"	54"	58"	64"	70"
Length "A"	Overall Frame Width	25 1/4"	27 1/4"	29 1/4"	31 1/4"	33 1/4"	37 1/4"	39 1/4"	43 1/4"	45 1/4"	49 1/4"	53 1/4"	57 1/4"	61 1/4"	67 1/4"	73 1/4"
5'	WEIGHTS (Lbs.) Based on 3 3/4" Roller Centers	426	441	456	471	486	516	531	560	576	606	636	666	696	741	786
10'		750	778	806	833	861	916	944	999	1027	1083	1137	1193	1249	1332	1415
15'		1075	1115	1156	1197	1237	1319	1358	1441	1481	1563	1644	1725	1807	1929	2051
20'		1399	1453	1506	1559	1612	1719	1773	1879	1933	2039	2146	2253	2359	2519	2679
25'		1723	1790	1856	1922	1989	2121	2188	2320	2387	2519	2652	2785	2917	3116	3315
30'		2047	2126	2205	2284	2363	2521	2600	2758	2837	2995	3153	3311	3469	3706	3943
40'		2696	2801	3011	3115	3220	3429	3534	3743	3848	4057	4267	4476	4685	4999	5313
50'		3345	3476	3606	3736	3867	4127	4258	4518	4649	4909	5170	5431	5691	6112	6473
60'		3992	4148	4304	4460	4616	4928	5084	5396	5552	5864	6176	6488	6800	7268	7736
70'		4641	4823	5005	5186	5368	5731	5913	6276	6458	6821	7185	7548	7911	8456	9001
80'		5294	5498	5702	5906	6110	6518	6722	7130	7334	7742	8150	8558	8966	9578	10190
90'		5857	6097	6337	6577	6816	7296	7535	8015	8254	8734	9213	9692	10172	10891	11610
100'		6577	6843	7374	7639	7905	8435	8701	9231	9498	10027	10558	11089	11619	12415	13211

Roller	WEIGHT VARIATION PER FOOT 2 5/8" DIA. ROLLER															
Centers	Conveying Surface	15 3/4"	17 3/4"	19 3/4"	21 3/4"	23 3/4"	27 3/4"	29 3/4"	33 3/4"	35 3/4"	39 3/4"	43 3/4"	47 3/4"	51 3/4"	57 3/4"	63 3/4"
4"	ADD-ON	16.0	16.7	17.4	18.0	18.7	20.1	20.8	22.2	22.9	24.3	25.7	27.0	28.4	30.5	32.6
6"	DEDUCTION	4.4	4.8	5.2	5.6	6.0	7.0	7.4	8.2	8.6	9.4	10.2	11.2	12.0	13.2	14.4
7 1/2"		8.8	9.6	10.4	11.2	12.0	13.8	14.6	16.2	17.0	18.8	20.4	22.2	23.8	26.4	28.8
10"		13.2	14.2	15.6	16.8	18.0	20.6	21.8	24.4	25.6	28.2	30.6	33.2	35.6	39.4	43.2
12"		15.4	16.6	18.2	19.6	21.0	24.0	25.4	28.4	29.8	32.8	35.8	38.6	41.6	46.0	50.4

All weights in catalog are conveyor weights only. Accessories, crating, etc., are not included.

NOTE: Add on an additional 25% overall for 2-5/8" dia. rollers.

NOTE: Stockyard models available in 4" and 6" roller centers on 2-1/2" dia. rollers only.



Standard Specifications

BED—Roller bed with 2-1/2 in. dia. x 11 ga. unplated tread rollers spaced every 4 in. with No. 40 roller chain; 3-3/4 in., 5 in., 7-1/2 in., or 10 in. with No. 50 roller chain. No. 60 roller chain used on 3-3/4 in., 6 in., 7-1/2 in. and 12 in. roller centers only. Tread rollers mounted in 4 in. x 4 ga. powder painted formed steel channel frame and bolted together with butt couplings.

CENTER DRIVE—Can be placed in any section of conveyor length, specify. Chain guard located on left hand side.

DRIVE CHAIN—No. 40, 50 or 60 roller chain.

CHAIN GUARD—Formed steel, upper and lower chain guard mounted to top and bottom of channel frame to totally enclose drive chains.

BEARINGS—Sealed, pre-lubricated ball bearings.

SPEED REDUCTION—Sealed worm gear C-Face speed reducer.

MOTOR—3/4 HP—230/460V—3 Ph. 60 Hz. Totally Enclosed C-Face.

CONVEYING SPEED—Constant 30 FPM.

CAPACITY—Maximum load per linear foot of conveyor 300 lbs. with supports on 10 ft. centers, 1000 lbs. with supports on 5 ft. centers. Contact factory for capacity of No. 40 chain, 4 in. roller centers. NOT TO EXCEED CAPACITY IN CHART.

FLOOR SUPPORTS—Now supplied as optional equipment.



GUARD REMOVED TO ILLUSTRATE ROLL-TO-ROLL DRIVE CHAIN
WARNING: Do not operate conveyor with Chain Guard removed.

LOAD CAPACITY CHART @ 30 FPM		
HP	TOTAL LOAD (Lbs.)	
	UP TO 50'	UP TO 100'
3/4	6000	2800
1	9000	6000
1 1/2	15000	12000
2	22000	18000

Optional Equipment

FLOOR SUPPORTS—HS Type floor supports are available with a wide range of adjustment. Specify top of belt or roller elevation. One support required at every bed joint and ends of conveyor. Holes in feet for lagging to floor. Knee braces recommended above HS-6 support.

CONVEYING SPEED—Other constant and variable speeds. V-belt supplied on speeds under 12 FPM (3/4-1 HP). **NOTE: Capacity affected with speed change.**

TOP SIDE MOUNTED DRIVE—Motor reducer unit mounted to side of conveyor with drive chain through top of chain guard. Specify clearances. Minimum elevation top of rollers 6 in.

BOTTOM SIDE MOUNTED DRIVE—Motor reducer unit mounted to side of conveyor with drive chain through bottom of chain guard. Specify clearances. Minimum elevation top of rollers 11 in.

V-BELT DRIVE—V-belt supplied between motor and reducer.

O-RING DRIVE CHAIN—With sealed in lubricant (Recommended for applications that do not permit regular lubrication).

FRAMES—4 in. X 5.4 lb. structural channel.

GUARD RAILS—Fixed angle (2 in. high x 1/4 in. steel) guard bolts to top flange of channel opposite chain guard.

CHANNEL END STOP—6" x 8.2 lb. structural channel end stop.

ROLLERS SET LOW—Tread rollers mounted in 5 in. x 4 ga. formed steel channel frame to form 5/8 in. high guard rails. Also available in 5 in. x 6.7 lbs. structural channel frame. Specify.

TREAD ROLLERS—2-5/8 in. dia. x 7 ga. steel. 11/16 hex spring loaded shaft (26-CRR).

CHAIN CROSSOVER—Separate 3-roller section moves driving chain from one side of conveyor to other. Offset-style adds 12 in. to OAL of conveyor with No. 40 chain, 15 in. with No. 50 chain & 18 in. with No. 60 chain.

TRANSFERS—Chain transfers available. See Accessory section.

MOTORS—Energy efficient, single phase, other characteristics. 2 HP maximum.

ELECTRICAL CONTROLS—Non-reversing magnetic starter — push-button stations. AC variable frequency drive.