

# Model 20-CR Chain Driven Live Roller Conveyor

CHAIN ROLLER

The Model 20-CR is a medium-duty chain driven roller conveyor used for conveying oily parts. Can be used in bottling and steel industries. The 20-CR produces a positive drive that aids in many manufacturing processes.



Conveyor shown with optional floor supports

- ★ 11 Bed Widths
- ★ Center Drive
- ★ Reversible
- ★ Chain Driven Rollers
- ★ Adjustable MS-Type Floor Supports Available

SIZE TO ORDER Overall Length "A"	Conveying Surface	13 1/4"	15 1/4"	17 1/4"	19 1/4"	21 1/4"	23 1/4"	25 1/4"	29 1/4"	31 1/4"	35 1/4"	37 1/4"
	Between Rail Width	15"	17"	19"	21"	23"	25"	27"	31"	33"	37"	39"
	Overall Frame Width	18"	20"	22"	24"	26"	28"	30"	34"	36"	40"	42"
5'	WEIGHTS (Lbs.) Based on 4" Roller Centers	331	343	356	368	381	394	404	427	440	457	469
10'		467	476	507	526	547	568	583	621	742	668	687
15'		625	642	690	709	739	769	790	844	878	910	917
20'		761	775	833	867	905	943	969	1038	1076	1121	1155
25'		919	941	1008	1050	1097	1144	1176	1261	1308	1363	1405
30'		1055	1074	1159	1208	1263	1318	1355	1455	1510	1574	1623
40'		1349	1373	1485	1549	1621	1693	1741	1872	1944	2027	2089
50'		1643	1673	1811	1890	1979	2068	2127	2289	2378	2480	2559
60'		1937	1971	2137	2230	2337	2443	2513	2706	2812	2933	3127
70'		2231	2270	2463	2572	2695	2818	2899	3123	3246	3386	3495
80'		2525	2569	2789	2913	3053	3193	3285	3540	3680	3839	3963
90'		2819	2868	3115	3254	3411	3568	3671	3957	4114	4292	4431
100'	3113	3167	3441	3595	3769	3943	4057	4374	4548	4745	4899	

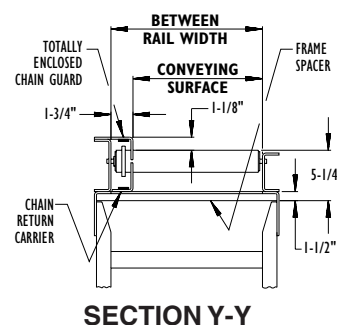
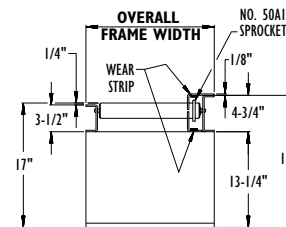
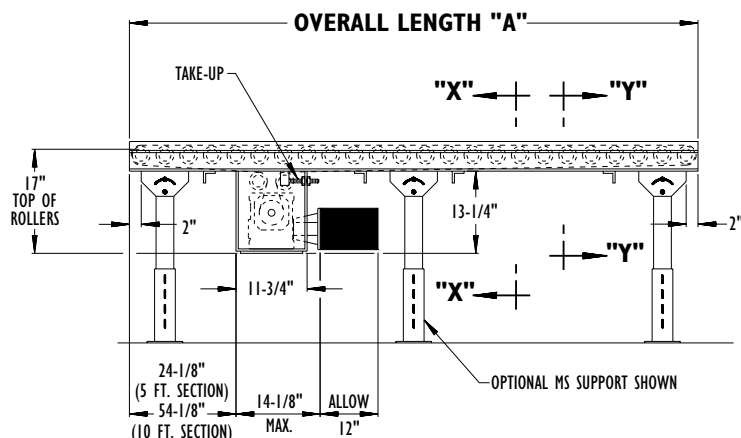
For 6", 8", & 12" Centers Deduct Weights Listed Below

Roller Centers		5' Long Bed Section										
	Conveying Surface	13 1/4"	15 1/4"	17 1/4"	19 1/4"	21 1/4"	23 1/4"	25 1/4"	29 1/4"	31 1/4"	35 1/4"	37 1/4"
6"	Weight	22	24	27	29	31	33	35	39	41	44	46
8"	Weight	33	36	40	43	46	50	52	58	62	65	68
12"	Deductions	44	48	54	58	62	66	70	78	82	88	92

Roller Centers		10' Long Bed Section										
	Conveying Surface	13 1/4"	15 1/4"	17 1/4"	19 1/4"	21 1/4"	23 1/4"	25 1/4"	29 1/4"	31 1/4"	35 1/4"	37 1/4"
6"	Weight	44	48	53	57	61	66	70	78	82	87	91
8"	Weight	66	72	79	85	92	99	103	116	123	130	136
12"	Deductions	88	96	106	114	122	132	140	156	164	174	182

All weights in catalog are conveyor weights only. Accessories, crating, etc., are not included.



## Standard Specifications

**BED**—Roller bed with 2-1/8 in. x 1/8 in. wall unplated tread rollers spaced every 4 in., 6 in., 8 in., or 12 in. mounted in 10 ga. powder painted formed steel channel frame bolted together with butt couplings.

**DRIVE**—Can be placed in any section of conveyor length, specify. Chain guard located on left hand side.

**DRIVE CHAIN**—No. 50 roller chain. (No. 50 circular roller chain used when slave driving curve or spurs).

**CHAIN RETURN**—Chain slides on wearstrip attached to chain return carrier, mounted to bottom of channel frame.

**CHAIN GUARD**—Mounted to top of channel frame to totally enclose drive chain.

**END ROLLERS**—2-1/8 in. dia. roller with high capacity bearings at ends of conveyor, chain guard side only.

**TAKE-UP**—2-1/8 in. dia. roller with high capacity bearings provide proper chain tension, chain guard side only.

**BEARINGS**—Sealed, pre-lubricated ball bearings.

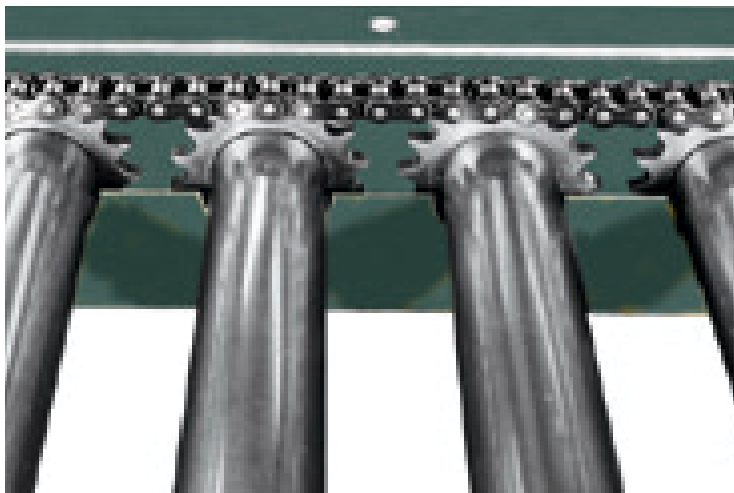
**SPEED REDUCTION**—Sealed worm gear C face speed reducer.

**MOTOR**—1/2 HP—230/460V—3 Ph. 60 Hz. Totally Enclosed C-Face.

**CONVEYING SPEED**—Constant 65 FPM.

**CAPACITY**—Maximum load per linear foot of conveyor 150 lbs. NOT TO EXCEED capacity in charts. Maximum conveyor length 100 ft..

**FLOOR SUPPORTS**—Now supplied as optional equipment.



### TREAD ROLLER DRIVEN BY DRIVE CHAIN

**WARNING:** Do not operate conveyor with Chain Guard removed.

LOAD CAPACITY CHART @ 65 FPM	
HP	TOTAL LOAD (Lbs.)
1/2	1500
3/4	2200
1	2800
1 1/2	3600
2	4400

## Optional Equipment

**FLOOR SUPPORTS**—MS Type floor supports are available with a wide range of adjustment. Specify top of belt or roller elevation. One support required at every bed joint and ends of conveyor. Holes in feet for lagging to floor. Knee braces recommended above MS-6 support.

**CONVEYING SPEED**—Other constant and variable speeds. V-belt drive supplied under 11 FPM (1/2-1 HP), 25 FPM (1-1/2 HP) and with variable speeds. **NOTE: Capacity affected with speed change.**

**SIDE MOUNTED DRIVE**—Motor reducer unit mounted to side of conveyor. Specify clearances. Minimum elevation top of rollers—12 in.

**SIDE MOUNTED END DRIVE**—Low elevation to provide 5-3/4 in. top of roller (supplied with rollers set low in drive and tail sections only).

**V-BELT DRIVE**—V-Belt supplied between motor and reducer.

**O-RING DRIVE CHAIN**—With sealed in lubricant (Recommended for applications that do not permit regular lubrication).

**CHAIN CROSSOVER**—Separate 3-roller section moves driving chain from one side of conveyor to other. "Off-set Style". Adds 12 in. to OAL of conveyor. Chain take-up supplied on slaved section of conveyor.

**ROLLERS SET LOW**—Tread rollers mounted in 4-3/4 in. x 10 ga. formed steel channel frame to form 1 in. high guard rails.

**GUARD RAILS**—Continuous adjustable channel, (both sides) fixed channel (both sides) or angle (one side). See Accessory section

**POLY-TIER SUPPORTS**—36 in. to 120 in. support heights in 6 in. increments. Knee braces supplied.

**CEILING HANGERS**—5/8 in. dia. x 8 ft. long unplated rods fully threaded. Other lengths and galvanized rods available.

**MOTORS**—Energy efficient, single phase, other characteristics. 2 HP maximum.

**ELECTRICAL CONTROLS**—Non-reversing magnetic starters and push-button stations. AC variable frequency drive.