

BACKSAVER LITE LIFTS



The world's leader in the design and manufacture of hydraulic lift tables introduces a new line of lift tables specifically designed to...

Improve productivity and increase worker safety in applications involving lighter loads.



BACKSAVER LITE LIFTS

Southworth Backsaver Lite Lifts are available in three basic configurations: Stationary, Portable with DC power and Compacts with extended vertical travel in a small footprint. Capacities are from 500 to 1,500 lbs. with vertical travel up to 35" depending on model. These rugged, dependable, low capacity lifts are packed with features, including:

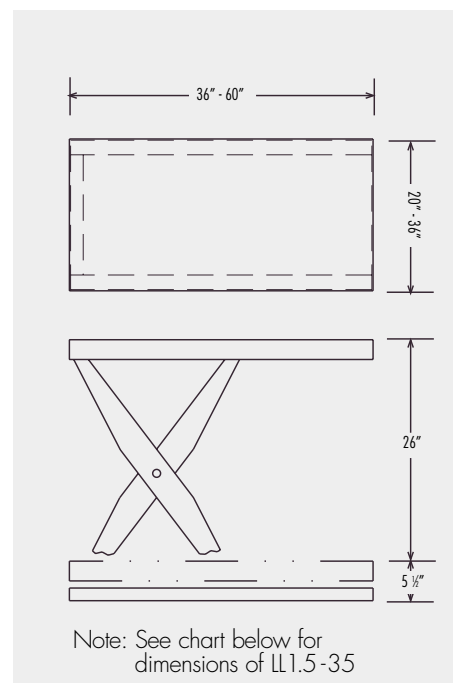
- Low pressure hydraulics
- Fast raising and lowering
- Fully adjustable down speed
- Heavy-duty torque tubes minimize deflection
- Lubricated for life pins, rollers and bushings
- Full width straight through axles for increased stability throughout the travel range
- Heavy-duty hoses for maximum burst strength
- Tell-tale return hydraulic line prevents fluid spillage
- Built-in safety chocks
- Bolt-on power unit is neat, clean and allows for easy access to all components



BACKSAVER LITE



Backsaver Lites are available in 550, 1100 and 1500 pound capacities with a variety of table top sizes to 36" x 60".

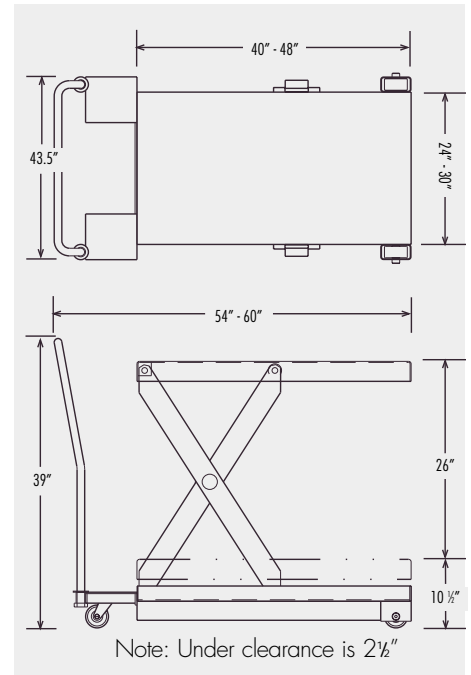


Model	Capacity	Vertical Travel	Height		Standard Platform	Max Platform	Rise Time Seconds	HP	Voltage Phase/Hertz	Weight (lb) STD Platform
			Min	Max						
LL05.5-26	550	26"	5½"	31½"	20" x 36"	36" x 60"	9	1/2	115/1/60	215
LL1.1-26	1100	26"	5½"	31½"	20" x 36"	36" x 60"	21	1/2	115/1/60	230
LL1.5-35	1500	35"	6¼"	41¼"	24" x 48"	36" x 60"	32	1/2	115/1/60	450

BACKSAVER LITE PORTABLE



Packed with all the features of our stationary lifts, Southworth Backsaver Lite Portables feature a small footprint along with four easy rolling 5" phenolic casters for unmatched maneuverability. The internal DC power unit with intergral charger features push button control to quickly and gently raise and lower loads. Units also feature comfort grip handles, corner bumpers and a center mounted positive floor lock.

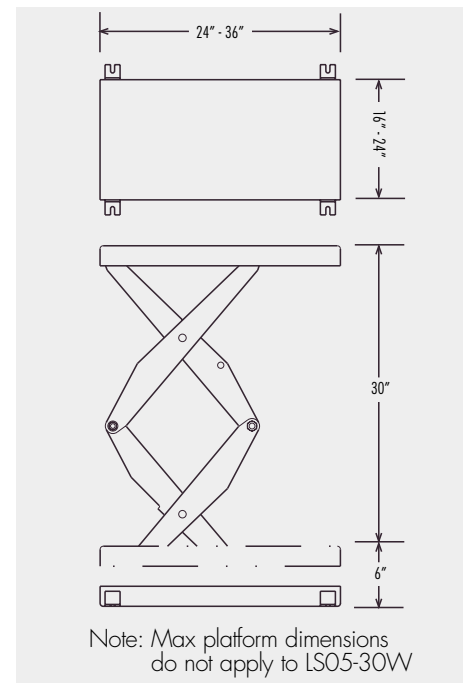


Model	Capacity	Vertical Travel	Height		Standard Platform	Max Platform	Rise Time Seconds	HP	Voltage Phase/Hertz	Weight (lb) STD Platform
			Min	Max						
CLL05.5-26	550	26"	10 1/2"	36 1/2"	24" x 40"	30" x 48"	7	1/2	12 Volt DC	335
CLL1.1-26	1100	26"	10 1/2"	36 1/2"	24" x 40"	30" x 48"	13	1/2	12 Volt DC	350

BACKSAVER LITE COMPACT



Compact versions of Backsaver Lite models, Backsaver Lite Compacts feature a double scissor mechanism to provide a full 36" of lifting height in a very small 12" x 24" footprint. Oversize platforms to 24" x 36" are available.



Model	Capacity	Vertical Travel	Height		Standard Platform	Max Platform	Rise Time Seconds	HP	Voltage Phase/Hertz	Weight (lb) STD Platform
			Min	Max						
LS05-30	500	30"	6"	36"	12" x 24"	12" x 24"	20	1/2	115/1/60	175
LS05-30W	500	30"	6"	36"	16" x 24"	24" x 36"	20	1/2	115/1/60	200
LS1-30	1000	30"	6"	36"	16" x 24"	24" x 36"	20	1/2	115/1/60	200



BACKSAVER LIFTS – AVAILABLE IN OVER ONE MILLION VARIATIONS

Extremely rugged and reliable Southworth Backsaver Lifts are used in thousands of locations everyday involving, machine feeding, work positioning, assembly, order picking, pallet loading, and many other applications. Standard capacities are 2000, 4000 and 6000 pounds. Standard lifting heights are up to 56". Higher capacities and lifting heights are available.



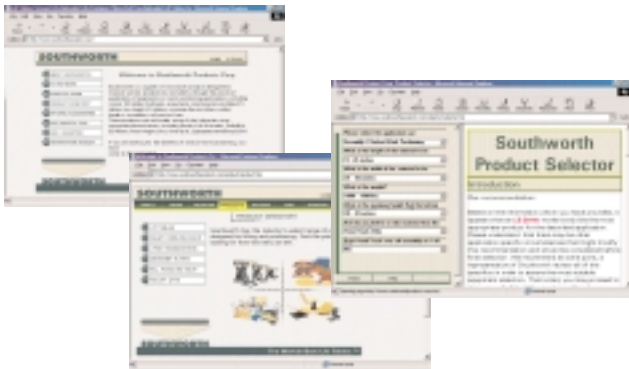
DANDY LIFT – LIFTER/TRANSPORTERS

These inexpensive lifter/transporters make just about any job easier. They are essential wherever lifting, positioning, assembling, stacking, unstacking, transporting or the need for an adjustable height worksurface is part of the job. Dandy Lifts are available in several models including: low profile for use with skids, containers or plastic pallets; selfleveling units which raise and lower automatically when loads change; lift and tilt models which are ideal for working with small parts in totes or junior containers.



THE ELPH

Whether it's just a few feet or to the other side of the plant, The ELPH is an ideal powered lifter/transporter. Special casters roll effortlessly over any surface, even carpet. Push button control positions The ELPH at any height between 14 1/4" and 32". The operating mechanism is a simple dependable screw driven by an integral DC motor. The built-in charger fully recharges the unit in less than four hours. Use this model anywhere you need a clean, quiet, precise versatile powered helper.



ALL THE INFORMATION YOU NEED AT THE CLICK OF A MOUSE

In order to provide customers with the information they need when they need it, Southworth has established the most complete and comprehensive website in the industry. Users can view product specifications or get help picking the right product for their application by using the state-of-the-art application selector guide.

Visit www.southworthproducts.com



Southworth Products Corp.
 P.O. Box 1380, Portland, ME 04104-1380
 TEL: (800) 743-1000 FAX: (207) 797-4734
www.southworthproducts.com
 email: salesinfo@southworthproducts.com

All dimensions and specifications subject to change without notice.

