

COIL LIFTER WITH LOAD WEIGHING SYSTEM



Bushman coil lifters can be equipped with weighing systems so that coils can be weighed while being loaded or unloaded. The load cell can be incorporated into the bail assembly or embedded within the grab frame. Low headroom designs are also available.

Features include:

- All electronic components that are easily replaced.
- Calibration settings saved in memory that is maintained even during power outages.
- Equipment compatible with most current network and computer systems.



COIL LIFTERS

Bushman Equipment manufactures a complete line of coil lifters which have been engineered to meet a variety of dimensional, capacity and special application needs. Quality built throughout, these lifters offer years of continuous, safe, efficient coil handling.

Designed to protect the integrity of the coil, Bushman lifters are manufactured from heavy steel weldments and feature telescoping, motor-driven legs and formed, curved saddles on the lifting surfaces. Standard features include a limit switch in the lifting pad to prevent accidental opening under load.

A number of optional features are also available to enhance lifting efficiency and load integrity. Features include photo cells to help in coil alignment; limit switches for controlling leg travel; load weighing with digital display; full length pads on all coil contact surfaces; and rubber, plastic or alloy rollers in the lifting pads.

This literature highlights the standard features of Bushman coil lifters and focuses on some of the more popular design options. Bushman engineers will work with any design requirement, however challenging, in order to improve the efficiency, safety and quality of your specific coil handling process.



COIL LIFTER WITH MOTORIZED ROTATING BOTTOM BLOCK

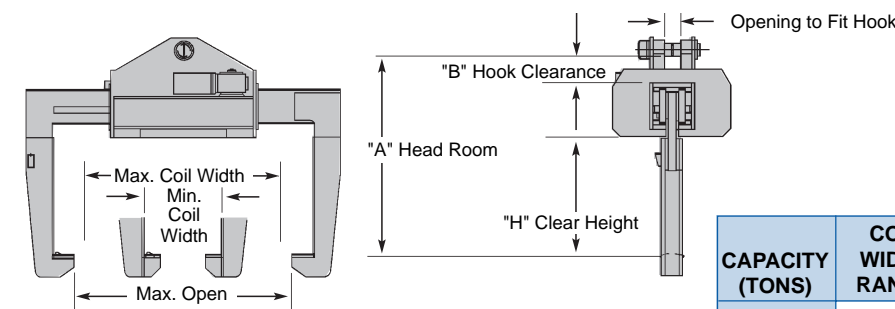


HYDRAULICALLY OPERATED COIL GRAB



Because of ongoing product modifications and improvements, the data in this brochure is subject to change without notice.

MODEL M5067 MOTOR DRIVEN COIL LIFTER

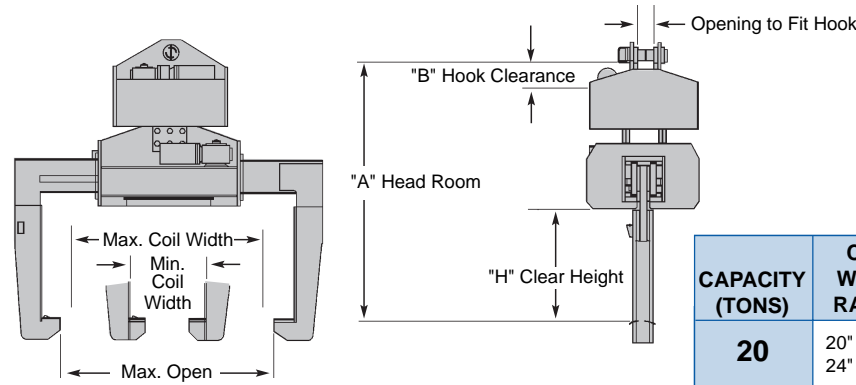


CAPACITY (TONS)	COIL WIDTH RANGE	CLEAR HEIGHT H	HEAD-ROOM * A	BAIL OPENING B	WEIGHT (LB.)
20	20" to 60" 24" to 72"	30"	51 3/4"	7"	3600 3650
25	20" to 60" 24" to 72"	36"	61"	8"	4600 4650
30	20" to 60" 24" to 72"	36"	61"	8"	4600 4650
35	24" to 72" 26" to 80"	36"	61"	8"	4700 4775
40	24" to 72" 26" to 80"	36"	61"	8"	4800 4875
50	24" to 72" 28" to 84"	40"	66"	9"	5500 5600

Combining operating efficiency, protection of the coil, and utilization of the overhead crane system, the standard M5067 coil lifter offers the most comprehensive coil handling features. The lifter can be operated with cab, pendant or remote controls. All units include replaceable wear bars in the frame. Optional features can be added to adjust to the particular needs of the coil handling system.

For sizes or capacities not shown, please consult factory.
* A dimensions are based on standard low headroom design.

MODEL MR5067 COIL LIFTER

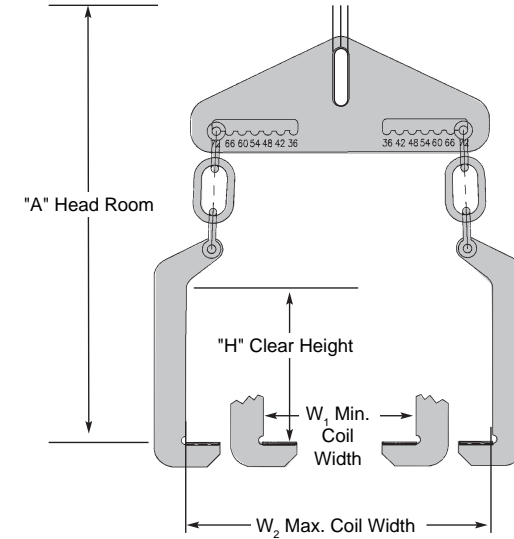


The MR5067 is a low headroom lifter designed to provide precise coil positioning. Rotation is accomplished by means of a gear motor and a slip clutch with an integral pinion driving a geared bearing. The rotation drive is protected from shock loading by an overload clutch. The geared bearing is designed in compression for a fail safe system.

CAPACITY (TONS)	COIL WIDTH RANGE	CLEAR HEIGHT H	HEAD-ROOM * A	B	WEIGHT (LB.)
20	20" to 60" 24" to 72"	30"	72 ³ / ₄ "	8"	5700 5750
25	20" to 60" 24" to 72"	36"	82 ¹ / ₄ "	8"	6800 6850
30	20" to 66" 24" to 72"	36"	82 ¹ / ₄ "	8"	6800 6850
35	24" to 72" 26" to 80"	36"	82 ¹ / ₄ "	8"	7200 7250
40	24" to 72" 26" to 80"	36"	82 ¹ / ₄ "	8"	7200 7250
50	24" to 72" 28" to 84"	40"	89 ³ / ₄ "	9"	7700 7800

For sizes or capacities not shown, please consult factory.
* "A" dimensions are based on standard low headroom design.

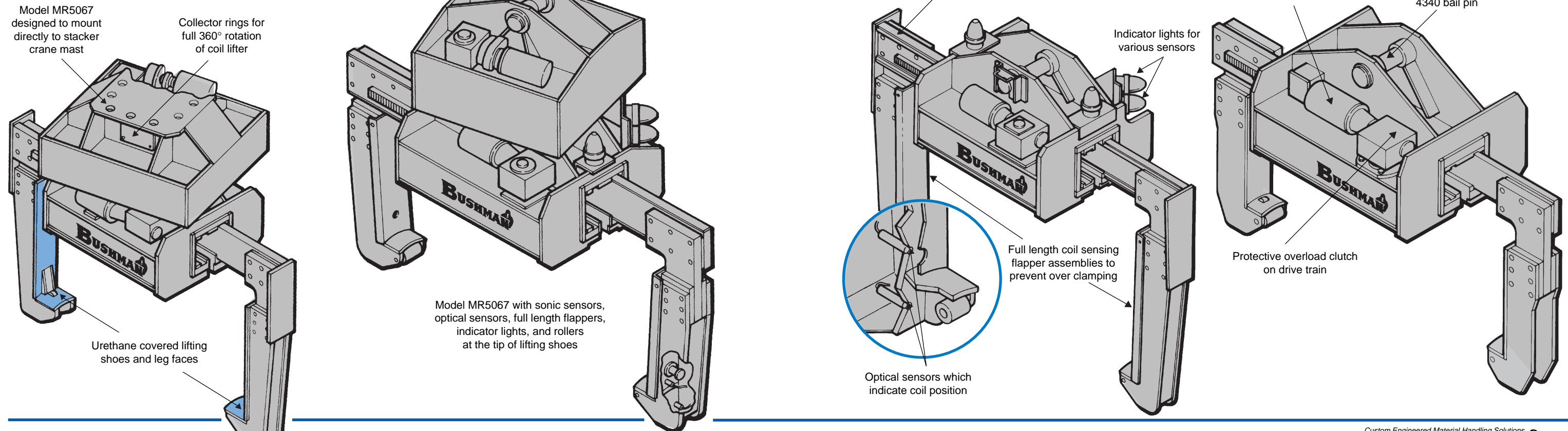
MODEL 427 ADJUSTABLE COIL LIFTER



The model 427 lifter is especially suited for applications with lower duty cycles and those in which operators are in close proximity to the coil. Reliable and economical to operate, the model 427 is very effective for use in narrow aisles.

CAPACITY (TONS)	COIL WIDTH		CLEAR HEIGHT H	HEAD-ROOM A	WEIGHT (LB.)
	MIN. W ₁	MAX. W ₂			
15	18"	48"	24"	60"	530
	18"	60"	24"	60"	600
20	18"	48"	24"	60"	750
	18"	60"	24"	60"	800
	18"	72"	24"	65"	850
25	18"	60"	30"	75"	950
	18"	72"	30"	75"	1,000
	18"	84"	30"	80"	1,050
30	18"	60"	30"	86"	1,400
	18"	72"	30"	86"	1,480
	18"	84"	30"	96"	1,500
35	30"	72"	30"	88"	1,700
	36"	72"	30"	92"	1,750
40	30"	72"	30"	92"	1,650
	36"	72"	30"	92"	1,700
	36"	96"	30"	108"	2,500

OPTIONAL COIL LIFTER FEATURES



Bushman Equipment recommends that a stand be procured for each coil lifter. Consult factory for details.

ALL BUSHMAN COIL LIFTERS ARE DESIGNED AND MANUFACTURED IN ACCORDANCE WITH ANSI STANDARD B30.20.