

Healthcare Storage Solutions



Organize Supplies • Reduce Inventory • Utilize Space

CLEAR

STORAGE SOLUTIONS

Save Time Looking For Supplies!

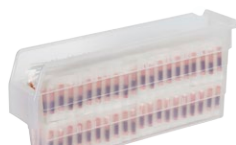
Akro-Mils offers the largest selection of clear storage solutions in the industry.

Clear Bins Provide:

- Maximum Visibility
- Easy Parts Identification
- Optimized Storeroom Efficiency



Akro-Grid
33105SCLAR



ShelfMax8® Bin
30848SCLAR



**Universal
Hanging Bin**
36220SCLAR



Stak-N-Store
13017SCLAR



Shelf Bin
30120SCLAR



**Attached
Lid Container**
39085SCLAR



ShelfMax Bin
30098SCLAR



Tote Caddy
09185SCLAR



InSight® Bin
305B1



AkroDrawer®
31168SCRY



AkroBin®
30230SCLAR



Super-Size AkroBin®
30286SCLAR

Contents

Storage Bins.....	3-13
Cabinets	14-19
Louvered Panels & Racks.....	20-21
Wire Shelving Units & Components	22-26
Carts & Dollies.....	27-30
5S Lean & Kanban	30-31

AkroBins®

- Separate look-alike/sound-alike medications using different colors of bins
- Multiple sizes and colors allow **color coding** (vertically and horizontally) and **easy identification** of supplies
- Molded of industrial-grade polymers
- Bins sit on shelves or hang from Akro-Mils panels, racks, rails and carts
- AkroBins stack securely to optimize shelf space
- Wide hopper fronts ensure easy access
- Available in 12 colors including Clear



30230BLUE



30240BLUE and 30250BLUE AkroBins paired with 30161BEIGE louvered panels; 30288MOB Super-Size AkroBins fit right underneath (see page 5)



Kanban Extended Label Holder with orange flag to show bin needs restocked (see page 31)



"See-through" clear **bin lids** protect contents



Crystal clear **lengthwise dividers**



Large **front label slot** for easy coding and scanning



Lengthwise dividers keep items separated



New 30237 fits perfectly on 18" deep shelving for a two-bin Kanban system



AWS184830260G
AkroBin Wire System



30242SCLEAR



30210YELLO



30220PURPL



30230GREEN



30239LTBLU



30235BLUE



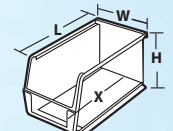
30240STONE

AkroBins	Outside Dimensions (In.)			Capacity/Quantity		Accessories					
Model No.	L	W	H	Bin Load Cap. On Rack	Bin Ctn. Qty.	Black Length Dividers**	Clear Length Dividers**	Width Dividers**	Divider Pkg. Qty.	Bin Lids***	Lid Pkg. Qty.
30210* ⁵	5-3/8	4-1/8	3	10 lbs.	24	40210 (1)	—	40210CRY	6	30211CRY	24
30220* ⁵	7-3/8	4-1/8	3	10 lbs.	24	40220 (1)	—	40220CRY	6	30221CRY	24
30232	5-3/8	11	3	15 lbs.	8	40210 (3)	—	40210CRY	6	30233CRY	8
30242	7-3/8	11	3	15 lbs.	8	40220 (3)	—	40220CRY	6	30243CRY	8
30237	9-1/4	6	5	20 lbs.	12	40237 (1)	—	40237CRY	6	—	—
30224*	10-7/8	4-1/8	4	20 lbs.	12	40224 (1)	—	40224CRY	6	30225CRY	12
30230* ⁵	10-7/8	5-1/2	5	30 lbs.	12	40230 (1)	41230 (3)	40230CRY	6	30231CRY	12
30234* ⁵	14-3/4	5-1/2	5	50 lbs.	12	40234 (1)	—	40234CRY	6	—	—
30239* ⁵	10-3/4	8-1/4	7	50 lbs.	6	40239 (1)	—	40239CRY	6	—	—
30240* ⁵	14-3/4	8-1/4	7	60 lbs.	12	40245 (1)	—	40245CRY	6	—	—
30265	18	8-1/4	9	60 lbs.	6	40265 (1)	—	40265CRY	6	—	—
30235*	10-7/8	11	5	50 lbs.	6	40230 (3)	—	40230CRY	6	30236CRY	6
30260	18	11	10	60 lbs.	6	40260 (3)	—	40260CRY	6	—	—
30255	10-7/8	16-1/2	5	60 lbs.	6	40230 (3)	—	40230CRY	6	—	—
30250* ⁵	14-3/4	16-1/2	7	75 lbs.	6	40245 (3)	41250 (3)	40245CRY	6	—	—
30270	18	16-1/2	11	75 lbs.	3	40270 (3)	41270 (3)	40270CRY	6	—	—
30320	8-5/8	33	5	80 lbs.	4	40321 & 40220 (7)	—	40220CRY	7/6	30321	4

One color per carton. Specify Red, Blue, Yellow, Stone, Clear, Green or Black. Order in carton quantities. CAUTION: When using bins with hanging systems, do not exceed the weight capacity for the rack, which may be less than the total sum of bin capacities. 40321=Tail Divider; 40220=Short Divider. *Available in Specialty Colors: Purple and Light Blue. #Available in Hunter Green, Sandstone and Terra Cotta. **(*) = Max. # of dividers per bin. ***Assembly required -- 30211CRY replaces 30211; 30221CRY replaces 30221; 30231CRY replaces 30231; 30236CRY replaces 30236.

AkroBin Wire Systems					Shelf Dimensions (In.)			Quantity	
Model No.	Description	AkroBin Colors	D	L	H	# of Bins	Shelves		
AWS143630320	Wire Shelving w/ 30320 Bins	B, R, Y, G, S, BK, SC	14	36	74	12	11		
AWS143630240	Wire Shelving w/ 30240 Bins	B, R, Y, G, S, BK, SC	14	36	74	36	4		
AWS143630250	Wire Shelving w/ 30250 Bins	B, R, Y, G, S, BK, SC	14	36	74	18	4		
AWS184830260	Wire Shelving w/ 30260 Bins	B, R, Y, G, S, BK, SC	18	48	74	24†	6		
AWS183630265	Wire Shelving w/ 30265 Bins	B, R, Y, G, S, BK, SC	18	36	74	18†	5		
AWS183630270	Wire Shelving w/ 30270 Bins	B, R, Y, G, S, BK, SC	18	36	74	9†	5		

Bin color code: R=Red, B=Blue, Y=Yellow, G=Green, S=Stone, BK=Black, SC=Clear. Specify one bin color when ordering. †Bonus bins included.



InSight® Bins

- Provide **maximum visibility** to users in a sleek, modern design
- Can stack, sit on shelving or hang on Akro-Mils rails, louvered panels or ReadySpace® Storage System
- Optional lids protect contents from dust – will stack with lids in place
- Patent Pending: No-tip feature when bins are stacked
- Large label area for part identification and bar code scanning
- Clear length and width dividers available
- Autoclavable
- Available in 4 sizes



305A3



Bins stack with lids in place

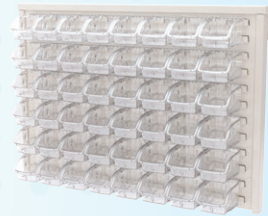


Lids protect bin contents from dust



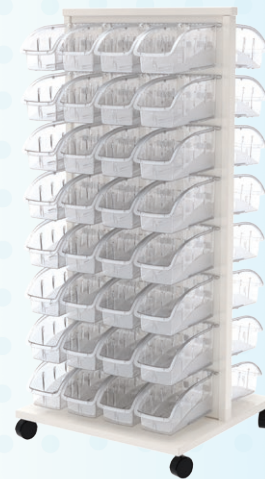
305A3

insight
by Akro-Mils



Wall Unit (30536A3 shown)

Frees up valuable workspace. Clean, sleek look with a white powder-coated finish. Four bin size packages available. See pg. 21 for details.



Mobile Floor Unit (30553B1 shown)

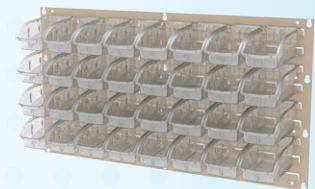
Organizes, shares and transports supplies and products. Perfect for "high-demand" items. Panel easily locks into posts on base without tools. Four bin size packages available. See pg. 21 for details.

InSight	Outside Dimensions (In.)			Capacity/Quantity		Accessories					
Model No.	L	W	H	Capacity (lbs.)	Bin Ctn. Qty.	Width Divider	Divider Pkg Qty.	Length Divider	Divider Pkg Qty.	Lid	Lid Pkg Qty.
305A1	5-3/8	4-1/8	3-1/4	10	16	415A1 (1)	8	405A1 (1)	8	305A2	16
305A3	7-3/8	4-1/8	3-1/4	10	16	415A1 (2)	8	405A3 (1)	8	305A4	16
305A5	10-7/8	4-1/8	3-1/4	15	12	415A1 (3)	8	405A5 (1)	6	305A6	12
305B1	10-7/8	5-1/2	5-1/4	25	12	415B1 (3)	6	405B1 (1)	6	305B2	12

in () represents divider slots per bin.

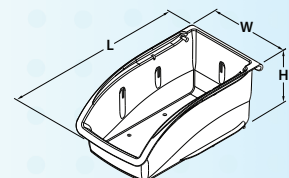
InSight Louvered Panel Systems			InSight Louvered Panel and Bin Combinations			
Model No.	Description	Bin Qty.	Model No.	305A1	305A3	305A5
30636BEIGE1	35-3/4" x 19" Louvered Panel with 305A1	32	30618BEIGE	16	16	16
30636BEIGE3	35-3/4" x 19" Louvered Panel with 305A3	32	98600BEIGE	30	30	30
30636BEIGE5	35-3/4" x 19" Louvered Panel with 305A5	32				
30636BEIGEB1	35-3/4" x 19" Louvered Panel with 305B1	18				

Bins sold separately.



Louvered Panel Unit (30636BEIGE Louvered Panel shown with 305A3 bins)

Louvers securely support InSight bins. Use alone or side-by-side with additional louvered panels. Easy one-person assembly.



Super-Size AkroBins®

- Perfect for organizing and protecting **large or bulky items**
- Heavy-duty bins stack securely atop each other or sit on shelving
- Molded of industrial-grade polymers
- Window inserts, hinged lids and dividers available for expanded storage options
- Available in 12 sizes and 5 colors: Red, Blue, Yellow, Gray or Clear



30289MOB5CLAR



30280BLUE, 30281YELLOW,
30282RED with optional lids



302865CLAR

NEW!



Hinged Lids available for 6 bin models



Easy to carry with **large handle** molded onto back of bin



Add a **Mobile Kit** to easily transport heavy supplies



Optional dividers keep parts separated widthwise or lengthwise



Super-Size AkroBins	Outside Dimensions (In.)			Capacity/Quantity			Accessories								
	Model No.	L	W	H	Max. Cap. per Bin	Stacking Cap./= Qty. Stacked	Ctn. Qty.	Width Dividers*	Length Dividers*	Divider Pkg. Qty. W L	Bin Lids	Lid Pkg. Qty.	Windows	Window Pkg. Qty.	Card Stock Holder
	30280	20	12-3/8	6	200 lbs.	40 lb./10	4	—	40280 (3)	— 2	30280L	4	21280	2	29304
	30281	20	12-3/8	8	200 lbs.	50 lb./7	3	—	40281 (3)	— 3	30281L	3	21281	3	29304
	30282	20	12-3/8	12	200 lbs.	60 lb./5	2	—	40282 (3)	— 1	30282L	2	21282	2	29304
	30283	20	18-3/8	12	300 lbs.	150 lb./5	1	—	40282 (3)	— 1	30283L	1	21283	1	29304
	30284	23-7/8	8-1/4	7	200 lbs.	150 lb./5	4	41284 (2)	40286 (1)	2 4	—	—	21284	4	29304
	30286	23-7/8	11	7	200 lbs.	150 lb./5	4	41286 (2)	40286 (3)	2 4	30286L	4	21286	4	29304
	30287	23-7/8	11	10	300 lbs.	150 lb./5	4	41287 (2)	40287 (3)	6 6	—	—	21287	4	29304
	30288	23-7/8	16-1/2	11	300 lbs.	150 lb./5	1	41288 (2)	40287 (3)	6 6	—	—	21288	1	29304
	30288MOB†	Mobile 30288 bin with 3" locking casters**			200 lbs.	—	1	41288 (2)	40287 (3)	6 6	—	—	21288	1	29304
	30289	23-7/8	18-1/4	12	300 lbs.	150 lb./5	1	41289 (2)	40289 (3)	2 1	—	—	21289	1	29304
	30289MOB†	Mobile 30289 bin with 3" locking casters**			200 lbs.	—	1	41289 (2)	40289 (3)	2 1	—	—	21289	1	29304
	30290	29-1/4	18-3/8	12	300 lbs.	150 lb./5	1	—	40290 (3)	— 1	30290L	1	21283	1	29304
	30290MOB†	Mobile 30290 bin with 3" locking casters**			200 lbs.	—	1	—	40290 (3)	— 1	—	—	21283	1	29304
	30292	29-7/8	11	10	300 lbs.	150 lb./5	4	41287 (2)	40292 (3)	6 6	—	—	21287	4	29304
	30292MOB†	Mobile 30292 bin with 3" locking casters**			200 lbs.	—	4	41287 (2)	40292 (3)	6 6	—	—	21287	4	29304
	30293	29-7/8	16-1/2	11	300 lbs.	150 lb./5	1	41288 (2)	40292 (3)	6 6	—	—	21288	1	29304
	30293MOB†	Mobile 30293 bin with 3" locking casters**			200 lbs.	—	1	41288 (2)	40292 (3)	6 6	—	—	21288	1	29304

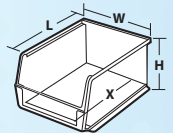
One color per carton. Specify Red, Blue, Yellow, Clear or Gray. Not recommended to hang on rack or panel systems. Order in carton quantities. * () = Max. # of divider slots per bin. † Assembly required. ** Add 3" to overall height of bin with casters.



AWS184830282Y
Super-Size AkroBin Wire System

Super-Size AkroBin Wire Systems		Shelf Dimensions (In.)			Quantity	
Model No.	Description	D	L	H	# of Bins	Shelves
AWS184830280	Wire Shelving w/ 30280 Bins	18	48	74	24	9
AWS184830281	Wire Shelving w/ 30281 Bins	18	48	74	18	7
AWS184830282	Wire Shelving w/ 30282 Bins	18	48	74	12	5
AWS184830283	Wire Shelving w/ 30283 Bins	18	48	74	8	5
AWS18485AB	Wire Shelving w/ 30280, 30281, 30282, 30283 Bins	18	48	74	4/3/4/4†	6
AWS24360284	Wire Shelving w/ 30284 Bins	24	36	74	28	8
AWS24360287	Wire Shelving w/ 30287 Bins	24	36	74	16†	6
AWS24360288	Wire Shelving w/ 30288 Bins	24	36	74	12	3
AWS243605AB	Wire Shelving w/ 30287 & 30288 Bins	24	36	74	12/6†	3
AWS24361288	Wire Shelving w/ 30288 Bins	24	36	63	10	3

Bin color code: R=Red, B=Blue, Y=Yellow, SC=Clear. Specify one bin color when ordering. † Bonus bins included.



ShelfMax® Bins

- 6" tall bins expand your storage capacity up to 85% over traditional 4" bins
- Front opening is .75" higher than comparable products
- **Superior, durable construction** compared to corrugated bins
- Width dividers keep items neatly separated
- Rolled ridge for added strength when filled to maximum capacity
- ShelfMax bins can be used alone, or with Akro-Mils' open or closed steel shelving, wire shelving, bench racks or pick racks
- 12 sizes and 4 color options: Red, Blue, Yellow or Clear



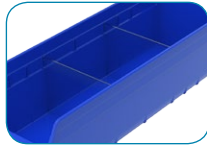
30098SCLAR



30094BLUE



Black Width Dividers
available for all sizes



Clear Width Dividers
available for all sizes



Large handle makes
bin easy to carry



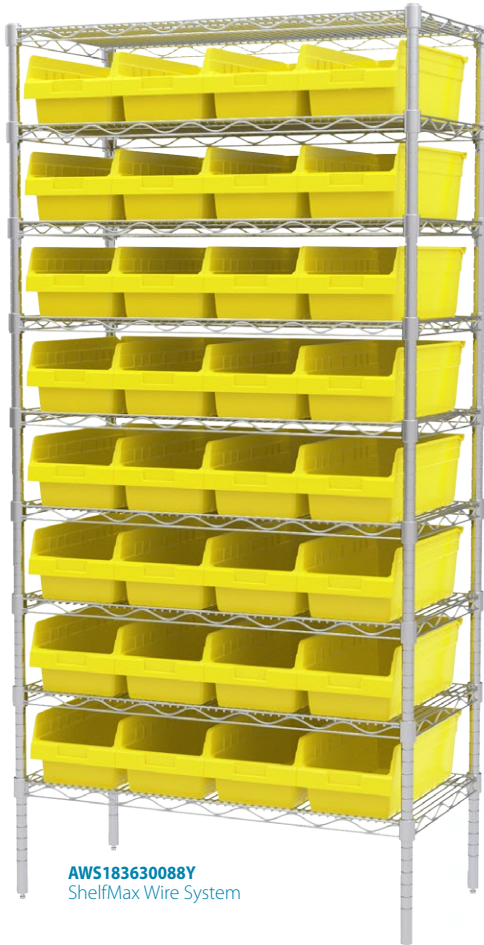
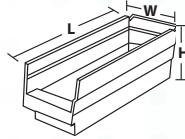
Large label area on
front of bin



**Kanban Extended Label
Holder** with orange
flag to show bin needs
restocked (see page 31)



Divider Label Tabs
help identify contents of
divided bin compartments
(see page 9)



AWS183630088Y
ShelfMax Wire System

ShelfMax	Outside Dimensions (In.)			Capacity/Quantity		Accessories		
Model No.	L	W	H	Cubic Inches	Ctn. Qty.	Black Width Dividers*	Clear Width Dividers*	Divider Pkg. Qty.
30040	11-5/8	4-1/8	6	175	16	40020 (7)	40020CRY (7)	12
30090	11-5/8	6-5/8	6	310	10	40030 (7)	40030CRY (7)	12
30080	11-5/8	8-3/8	6	398	8	40040 (7)	40040CRY (7)	12
30010	11-5/8	11-1/8	6	591	8	40050 (7)	40050CRY (7)	12
30048	17-7/8	4-1/8	6	280	8	40020 (7)	40020CRY (7)	12
30098	17-7/8	6-5/8	6	505	10	40030 (7)	40030CRY (7)	12
30088	17-7/8	8-3/8	6	648	8	40040 (7)	40040CRY (7)	12
30018	17-7/8	11-1/8	6	963	8	40050 (7)	40050CRY (7)	12
30044	23-5/8	4-1/8	6	410	16	40020 (7)	40020CRY (7)	12
30094	23-5/8	6-5/8	6	686	10	40030 (7)	40030CRY (7)	12
30084	23-5/8	8-3/8	6	935	6	40040 (7)	40040CRY (7)	12
30014	23-5/8	11-1/8	6	1303	6	40050 (7)	40050CRY (7)	12

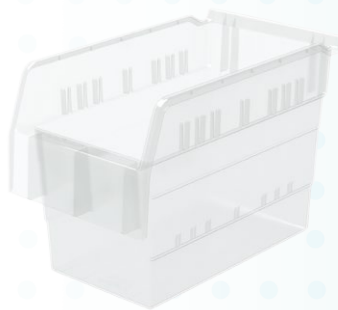
One color per carton: Specify Red, Blue, Yellow or Clear. Order in carton quantities. * () = Max. # of divider slots per bin.

6" ShelfMax Wire Shelving Systems		Shelf Dimensions (In.)			Quantity	
Model No.	Description	D	L	H	Bins	Shelves
AWS143630040	Wire Shelving w/ 30040	14	36	74	64	9
AWS143630090	Wire Shelving w/ 30090	14	36	74	40	9
AWS143630080	Wire Shelving w/ 30080	14	36	74	32	9
AWS143630010	Wire Shelving w/ 30010	14	36	74	24	9
AWS183630048	Wire Shelving w/ 30048	18	36	74	64	9
AWS183630098	Wire Shelving w/ 30098	18	36	74	40	9
AWS183630088	Wire Shelving w/ 30088	18	36	74	32	9
AWS183630018	Wire Shelving w/ 30018	18	36	74	24	9
AWS243630044	Wire Shelving w/ 30044	24	36	74	64	9
AWS243630094	Wire Shelving w/ 30094	24	36	74	40	9
AWS243630084	Wire Shelving w/ 30084	24	36	74	36†	9
AWS243630014	Wire Shelving w/ 30014	24	36	74	24	9

Bin color code: R=Red, B=Blue, Y=Yellow, SC=Clear. Specify one bin color when ordering. †Bonus bins included.

ShelfMax8® Bins

- Extra-large ShelfMax8 8" tall bins feature up to 95 percent more holding capacity than traditional 4" shelf bins, and 65 percent more capacity than 6" bins.
- Wide hopper front for easy access
- Oversized label area easily accommodates a 2" high adhesive label, or multiple labels for divided bins
- Divider design creates more secure bin partitions, and easier installation and removal of dividers
- Rear hanglock allows complete access to contents when tilted out on shelving



30860SCLEAR



30864BLUE

ShelfMax8	Outside Dimensions (In.)			Capacity/Quantity			Accessories				
Model No.	L	W	H	Cubic Inches	U.S. Gal.	Ctn. Qty.	Black Width Dividers*	Clear Width Dividers*	Divider Pkg. Qty.	Length Dividers*	Divider Pkg. Qty.
30840	11-5/8	4-1/8	8	233	1.01	16	40840 (7)	40840CRY (7)	12	—	—
30860	11-5/8	6-5/8	8	411	1.78	10	40860 (7)	40860CRY (7)	12	—	—
30880	11-5/8	8-1/4	8	520	2.25	8	40880 (7)	40880CRY (7)	12	—	—
30800	11-5/8	11-1/8	8	734	3.18	4	40800 (7)	40800CRY (7)	12/6	—	—
30820	11-5/8	22-1/2	8	1638	7.09	4	40820 (7)	40820CRY (7)	6	41820 (7)	12
30866	15-5/8	6-5/8	8	585	2.53	10	40860 (7)	40860CRY (7)	12	—	—
30886	15-5/8	8-1/4	8	740	3.20	8	40880 (7)	40880CRY (7)	12	—	—
30806	15-5/8	11-1/8	8	1044	4.52	4	40800 (7)	40800CRY (7)	12	—	—
30868	17-7/8	6-5/8	8	672	2.91	10	40860 (7)	40860CRY (7)	12	—	—
30888	17-7/8	8-1/4	8	851	3.68	8	40880 (7)	40880CRY (7)	12	—	—
30808	17-7/8	11-1/8	8	1200	5.19	4	40800 (7)	40800CRY (7)	12	—	—
30818	17-7/8	16-1/2	8	1897	8.21	4	40818 (7)	40818CRY (7)	6	41818 (7)	6
30828	17-7/8	22-1/2	8	2545	11.02	4	40820 (7)	40820CRY (7)	6	41818 (7)	6
30844	23-5/8	4-1/8	8	529	2.29	8	40840 (7)	40840CRY (7)	12	—	—
30864	23-5/8	6-5/8	8	932	4.03	10	40860 (7)	40860CRY (7)	12	—	—
30884	23-5/8	8-1/4	8	1179	5.10	8	40880 (7)	40880CRY (7)	12	—	—
30804	23-5/8	11-1/8	8	1662	7.19	4	40800 (7)	40800CRY (7)	12	—	—
30814	23-5/8	16-1/2	8	2533	10.97	4	40818 (7)	40818CRY (7)	6	41814 (7)	6
30824	23-5/8	22-1/2	8	3523	15.25	4	40820 (7)	40820CRY (7)	6	41814 (7)	6

One color per carton. Specify Red, Blue, Yellow or Clear. Order in carton quantities. * () = Max. # of divider slots per bin.



Length Dividers
available for 7 bin models



30844RED



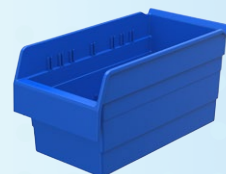
Black Width Dividers
available for all sizes



30840YELLO



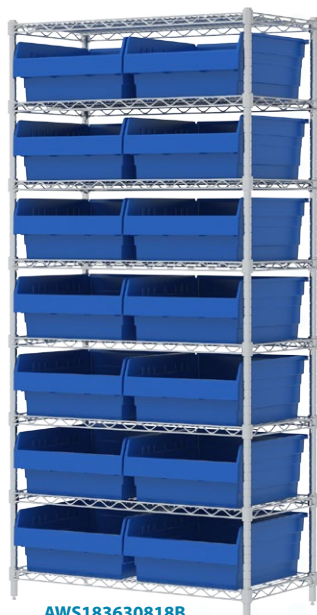
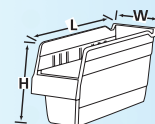
Clear Width Dividers
available for all sizes



30886BLUE



Large label area on front of bin



AWS1836308188
ShelfMax8 Bin Wire System

ShelfMax8 Wire Shelving Systems		Shelf Dimensions (In.)			Quantity	
Model No.	Description	D	L	H	Bins	Shelves
AWS143630840	Wire Shelving with 30840 Bins	14	36	74	64±	8
AWS143630860	Wire Shelving with 30860 Bins	14	36	74	40±	8
AWS143630880	Wire Shelving with 30880 Bins	14	36	74	32±	8
AWS143630800	Wire Shelving with 30800 Bins	14	36	74	24±	8
AWS183630868	Wire Shelving with 30868 Bins	18	36	74	40±	8
AWS183630888	Wire Shelving with 30888 Bins	18	36	74	32±	8
AWS183630808	Wire Shelving with 30808 Bins	18	36	74	24±	8
AWS183630818	Wire Shelving with 30818 Bins	18	36	74	16±	8
AWS243630844	Wire Shelving with 30844 Bins	24	36	74	56	8
AWS243630864	Wire Shelving with 30864 Bins	24	36	74	40±	8
AWS243630884	Wire Shelving with 30884 Bins	24	36	74	32±	8
AWS243630804	Wire Shelving with 30804 Bins	24	36	74	24±	8
AWS243630814	Wire Shelving with 30814 Bins	24	36	74	16±	8

Bin color code: R=Red, B=Blue, Y=Yellow, SC=Clear. Specify one bin color when ordering. ±Bonus bins included.

Shelf Bins

- Keep supplies neat and organized
- Create cleaner work areas – **eliminate cardboard** with reusable, eco-friendly bins
- Easy to label and color code for quick identification
- Works with 12", 18" and 24" deep shelving
- Durable, one-piece construction
- Bins nest when empty for space savings
- 13 sizes and 6 color options: Red, Blue, Yellow, Green, White or Clear



Divider Label Tabs help identify contents of divided bin compartments (see page 9)



Dividers create additional compartments



Kanban Extended Label Holder with orange flag to show bin needs restocked (see page 31)



Bin Cups lift out for easy access



AWS244830174G
4" Shelf Bin Wire System



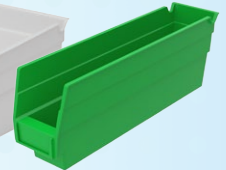
30130SCLEAR



30138YELLOW



30130WHITE

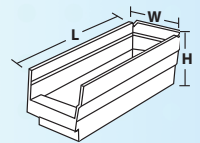


30110GREEN

Shelf Bins	Outside Dimensions (In.)			Capacity/Quantity		Cups per Bin		Accessories	
Model No.	L	W	H	Bin Load Capacity	Ctn. Qty.	Small 30101	Large 30102	Width Dividers*	Divider Pkg. Qty.
30110	11-5/8	2-3/4	4	7 lbs.	24	3	—	—	—
30120	11-5/8	4-1/8	4	10 lbs.	24	5	2	40120 (7)	24
30130	11-5/8	6-5/8	4	15 lbs.	12	9	4	40130 (7)	24
30150	11-5/8	8-3/8	4	15 lbs.	12	11	4	40150 (7)	24
30170	11-5/8	11-1/8	4	20 lbs.	12	15	6	40170 (7)	24
30128	17-7/8	4-1/8	4	15 lbs.	12	8	3	40120 (7)	24
30138	17-7/8	6-5/8	4	20 lbs.	12	15	6	40130 (7)	24
30158	17-7/8	8-3/8	4	20 lbs.	12	15	6	40150 (7)	24
30178	17-7/8	11-1/8	4	20 lbs.	12	25	12	40170 (7)	24
30124	23-5/8	4-1/8	4	20 lbs.	12	11	4	40120 (7)	24
30164	23-5/8	6-5/8	4	20 lbs.	6	21	8	40130 (7)	24
30184	23-5/8	8-3/8	4	20 lbs.	6	25	8	40150 (7)	24
30174	23-5/8	11-1/8	4	20 lbs.	6	35	16	40170 (7)	24

One color per carton: Specify Red, Blue, Yellow, Green, White or Clear. Order in carton quantities. * () = Max. # of dividers per bin.

Accessories		Outside Dimensions (In.)			Ctn. Qty.
Model No.	Description	L	W	H	
30101	Small Bin Cup	2	3-1/4	3	48
30102	Large Bin Cup	2-3/4	5	3	24
40410	10° Angle Extended Label Holder	—	4	2-1/4	24
40000	Divider Label Tab	2-3/4	3-1/8	1/2	6



4" Shelf Bin Wire Systems		Shelf Dimensions (In.)			Quantity	
Model No.	Description	D	L	H	# of Bins	Shelves
AWS143630120	Wire Shelving w/ 30120 Bins	14	36	74	96	12
AWS143630130	Wire Shelving w/ 30130 Bins	14	36	74	60	12
AWS143630150	Wire Shelving w/ 30150 Bins	14	36	74	48	12
AWS143630170	Wire Shelving w/ 30170 Bins	14	36	74	36	12
AWS183630128	Wire Shelving w/ 30128 Bins	18	36	74	96	12
AWS183630138	Wire Shelving w/ 30138 Bins	18	36	74	60	12
AWS183630158	Wire Shelving w/ 30158 Bins	18	36	74	48	12
AWS183630178	Wire Shelving w/ 30178 Bins	18	36	74	36	12
AWS244830124	Wire Shelving w/ 30124 Bins	24	48	74	120	12
AWS244830164	Wire Shelving w/ 30164 Bins	24	48	74	66	12
AWS244830184	Wire Shelving w/ 30184 Bins	24	48	74	60†	12
AWS244830174	Wire Shelving w/ 30174 Bins	24	48	74	48†	12

Bin color code: R=Red, B=Blue, Y=Yellow, G=Green, W=White, SC=Clear. Specify one bin color when ordering. †Bonus bins included.

Divider Label Tab

- Clearly identify bin contents in separate compartments
- Works with Akro-Mils bin width dividers
- Designed to sit nearly flush with the top of Shelf Bins and ShelfMax Bins, and will not get in the way on shelving
- Fits 1" x 3" adhesive label (sold separately)

Divider Label Tab		Dimensions (In.)			Accessories	
Model No.	Description	W	L	D	Ctn. Qty.	Adhesive Labels
40000	Divider Label Tab	2-3/4	3-1/8	1/2	6	29201, 29202



30138 with 40130 Dividers & 40000 Label Tabs

1800 Series AkroBins®

- Storage system for heavy, bulky items
- Strong, durable – molded of industrial-grade polymers
- Stackable with reinforcing ribs to prevent spreading under heavy loads
- Front and back finger grips for easy handling
- One black width divider included per bin
- Color: Beige



30348BEIGE



Removable divider for increased storage flexibility



Large front label area for content identification



Curved-bottom hopper front for easy content access

1800 Series	Outside Dimensions (In.)						
Model No.	L	W	H	Ctn. Qty.	Dividers	Pkg. Qty.	Capacity (Lbs.)
30348BEIGE	20-1/2	8-1/4	7	6	40348 (3)	6	60
30358BEIGE	20-1/2	11	7	6	40358 (3)	6	75

Available in Beige. Order in carton quantities.

1800 Series AkroBin Wire Systems		Shelf Dimensions (In.)			Quantity	
Model No.	Description	D	L	H	# of Bins	Shelves
AWS244830348BE	Wire Shelving w/ 30348 Bins	24	48	74	42±	5
AWS2460M30358	Mobile Wire Shelving w/ 30358 Bins	24	60	68	30	6

±Bonus bins included.



AWS2460M30358
1800 Series AkroBin
Mobile Wire System

AkroDrawers®

- Available in 9 sizes and 5 colors – including Crystal Clear
- Colors made of high-impact polystyrene, Crystal Clear drawers made of durable acrylic blend
- Offered in 12", 18" or 24" depths to work with shelving
- Easy to label and color code inventory for quick identification of supplies
- Wide front handle for easy gripping
- Drawers fit securely in cabinets or enclosed steel shelving for dust-free storage
- Dividers available to keep contents neatly separated in drawers



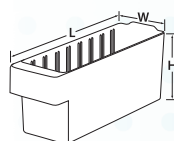
31168CRY



Backstop tab ensures bins tilt out without falling



Large label area and wide handle



31142CRY

31162BLUE

31182CRY

31188BLUE

31168CRY

akro-mils.com

AkroDrawers®

AkroDrawers	Outside Dimensions (In.)			Capacity/Qty.	Accessories		
Model No.	L	W	H	Weight Capacity	Ctn. Qty.	Dividers	Pkg. Qty.
31142	11-5/8	3-3/4	4-5/8	15 lbs.	6	41440	6
31148	17-5/8	3-3/4	4-5/8	20 lbs.	6	41440	6
31162	11-5/8	5-9/16	4-5/8	20 lbs.	6	41460	6
31168	17-5/8	5-9/16	4-5/8	25 lbs.	6	41460	6
31164	23 3/8	5-9/16	4-5/8	25 lbs.	6	41460	6
31182	11-5/8	8-3/8	4-5/8	20 lbs.	4	41480	6
31188	17-5/8	8-3/8	4-5/8	25 lbs.	4	41480	6
31112	11-5/8	11-1/8	4-5/8	25 lbs.	4	41410	8
31118	17-5/8	11-1/8	4-5/8	25 lbs.	4	41410	8

Specify drawer color when ordering: Red, Blue, Yellow, Gray or Crystal Clear.

Tote Caddy

- Compact, hand-held supply caddy
- Functional, deep compartments hold loose items, cleaning supplies or tools for easy transport
- The perfect phlebotomy caddy!
- Molded of heavy-duty, industrial-grade polymers for lasting durability
- Available in Blue or Clear

Tote Caddy		Dimensions (In.)			Ctn. Qty.
Model No.	Description	L	W	H	
09185BLUE	Blue Tote Caddy	13 ⁷ / ₈	18 ³ / ₈	9	6
09185SCLAR	Clear Tote Caddy	13 ⁷ / ₈	18 ³ / ₈	9	6

Order in carton quantities.

09185SCLAR



The 18" long caddy has plenty of room for supplies

Attached Lid Containers

- Securely store and transport supplies
- Maximum product protection
- Smooth interior for easy cleaning
- Stackable design, nestable to save space
- Attached lids snap securely and do not get lost
- Eliminate use of corrugated boxes
- Multiple colors to easily color code and identify contents



39120BLUE



39085SCLAR



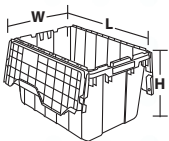
Lids can be zip-tied for added security during transport or storage



Containers nest when empty



Containers stack on closed lids



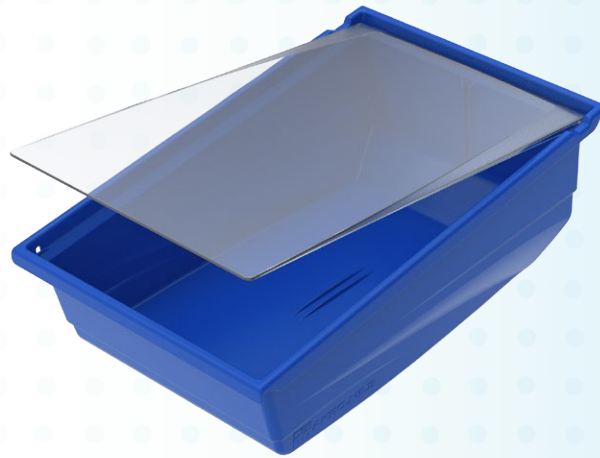
Attached Lid Containers (ALCs)		Outside Dimensions (In.)			Capacity/Qty.				
Model No.	Available Colors	L	W	H	Cu. Ft.	Gal.	Lbs.	Container Ctn. Qty.	Stack Cap./Qty. Stacked
39085	Blue, Gray, Clear	21-1/2	15	9	1.12	8.5	35	6	35 lbs./5
39120	Blue, Green, Red, Gray, Clear	21-1/2	15	12-1/2	1.62	12	65	6	65 lbs./5
39160	Gray	27	17	12-1/2	2.25	16.83	100	1	100 lbs./4
39170	Blue, Gray, Clear	21-1/2	15	17	2.28	17	100	3	100 lbs./3
39175	Gray	24	19-1/2	12-1/2	2.3	17.20	80	1	80 lbs./5
39280	Gray	28	21	15-1/2	3.82	28.57	100	1	100 lbs./4

Order in carton quantities. Specify color when ordering.

Universal Hanging Bins

Versatile, adaptable bins grow along with your operations!

- Bins can hang from all 4 sides
- Moves seamlessly from shelving to louvers to rails, **changing from a sloped bin to a regular profile with a 180° turn.**
- Sloped-side hanging lip lets bin hang at an angle
- Flat-side hanging lip keeps bin level when hanging
- Lids attach at either end of the bin
- Bin widths are sized to maximize storage space on standard width steel and wire shelving units
- Available in 7 sizes and 4 colors: Red, Blue, Yellow and Clear



Hangs flat.



Hangs sloped to maximize visibility and keep small items at the front of the bin.



Length Dividers are available for all sizes



Clear Lids attach at either end of the bin



Rear hanglock allows bin to tilt out on steel or wire shelving units



36220SCLEAR



36110YELLO



36120RED



36130BLUE



36140YELLO



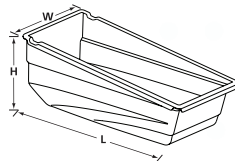
36220RED



36230YELLO



36240BLUE



Universal Hanging Bins	Outside Dimensions (In.)			Inside Dimensions (In.)			Quantity	Accessories			
Model No.	L	W	H	L	W	H	Bin Ctn. Qty.	Dividers	Divider Pkg. Qty.	Bin Lids	Lid Pkg. Qty.
36110	11-1/2	4-1/8	4-1/2	9-5/8	2-9/16	4-5/16	16	46110	12	36111CRY	8
36120	11-1/2	6-5/8	4-1/2	9-5/8	5-1/16	4-5/16	10	46110	12	36121CRY	10
36130	11-1/2	8-1/4	4-1/2	9-5/8	6-11/16	4-1/4	8	46110	12	36131CRY	8
36140	11-1/2	11	4-1/2	9-5/8	9-7/16	4-1/4	6	46110	12	36141CRY	6
36220	17-1/2	6-5/8	6-1/2	15-1/4	4-3/4	6-1/4	10	46220	6	36221CRY	10
36230	17-1/2	8-1/4	6-1/2	15-1/4	6-3/8	6-1/4	8	46220	6	36231CRY	8
36240	17-1/2	11	6-1/2	15-1/4	9-1/8	6-1/4	6	46220	6	36241CRY	6

One color per carton. Specify Red, Blue, Yellow or Clear. Order in carton quantities. CAUTION: When using bins with hanging systems, do not exceed the weight capacity for the rack.

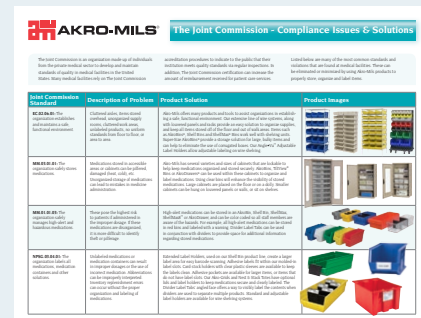
FREE GUIDE!

Did you know?

Akro-Mils products can help you resolve common Joint Commission compliance issues.

- Maintain a safe and functional environment
- Organize and safely store medications and solutions
- Maintain clear and uncluttered hallways and entryways
- Reduce the risk of infection
- Maintain 18" of clear space between storage and the sprinkler system

Download our free guide at: <https://akro-mils.com/Resources/Guides/Joint-Commission-Compliance>

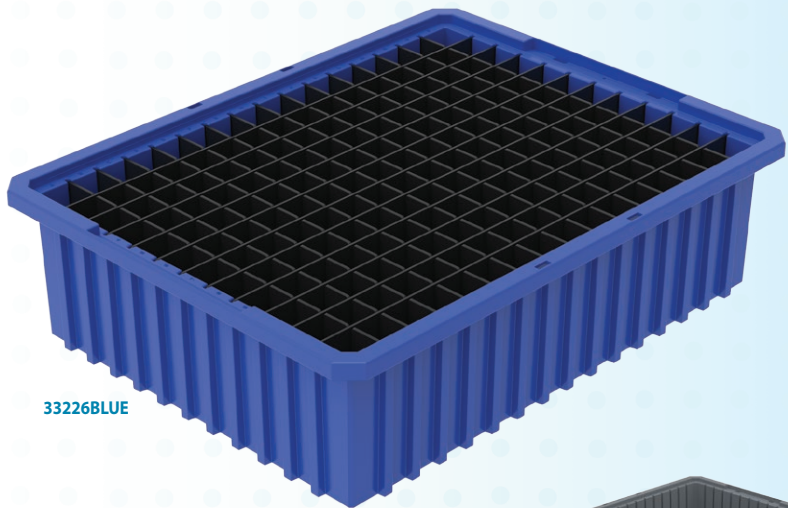


Akro-Grids

- Create custom sized compartments using optional lengthwise and crosswise dividers
- Great for organizing items and creating kits of items that are frequently used together
- 4 colors available for color coding and easy identification
- 13 sizes; same footprint models are stackable



33105CLAR



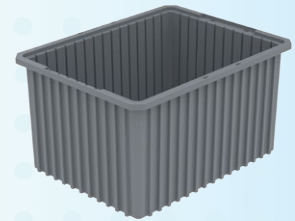
33226BLUE



33162RED



33165BLUE



33222GREY



Clear Snap-On Lids
keep contents clean and stack securely



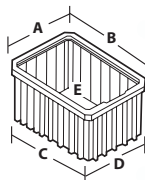
Dividers allow subdivision of the containers



Molded-in **letter/number system** for easy tracking



Clear **Plastic Label Holders** snap on any side of the container



	Akro-Grids	Outside Dimensions (In.)			Capacity/Qty.				Accessories				
	Model No.	L	W	H	Cu. Ft.	Gal	Lbs.	Bin Ctn. Qty.	Long Divider*	Short Divider*	Divider Pkg. Qty.	Max. No. of Compartments	
NEW!	33103	10-7/8	8-1/4	3-1/2	0.12	0.92	25	20	42103 (5)	41103 (7)	6	48	
	33105	10-7/8	8-1/4	5	.16	1.2	25	20	42105 (5)	41105 (7)	6	48	
NEW!	33162	16-1/2	10-7/8	2-1/2	0.20	1.5	20	12	42162 (7)	41162 (7)	6	96	
	33164	16-1/2	10-7/8	4	.29	2.2	20	12	42164 (7)	41164 (11)	6	96	
NEW!	33165	16-1/2	10-7/8	5	0.39	2.9	35	12	42165 (7)	41165 (11)	6	96	
	33166	16-1/2	10-7/8	6	.44	3.3	35	8	42166 (7)	41166 (11)	6	96	
	33168	16-1/2	10-7/8	8	.59	4.4	40	6	42168 (7)	41168 (11)	6	96	
	33220	22-3/8	17-3/8	10	1.66	12.4	50	2	42220 (11)	41220 (15)	6	192	
NEW!	33222	22-1/2	17-1/2	12	2.10	15.9	60	3	42222 (11)	41222 (15)	6	192	
	33223	22-1/2	17-3/8	3	.47	3.5	30	6	42223 (11)	41223 (15)	6	192	
	33224	22-3/8	17-3/8	4	.61	4.6	30	6	42224 (11)	41224 (15)	6	192	
	33226	22-3/8	17-3/8	6	.96	7.2	40	4	42226 (11)	41226 (15)	6	192	
	33228	22-3/8	17-3/8	8	1.30	9.7	50	3	42228 (11)	41228 (15)	6	192	

One color per carton. Specify Red, Blue, Grey or Clear. Order in carton quantities. *() = max # of dividers.

Clear Snap-On Lids		
Model No.	Fits Grid No.	Ctn. Qty.
33011	33103, 33105	10
33061	33162, 33164, 33165, 33166, 33168	4
33023	33220, 33222, 33223, 33224, 33226, 33228	3

Label Holders		
Model No.	Fits Grid No.	Pkg. Qty.
35010	Fits all except 33103, 33162, 33164, 33223, 33224	6
35011	33164, 33224	6

Adhesive Label		
Model No.	Fits Grid No.	Pkg. Qty.
29203	33103, 33162, 33223	10 sheets (120 total)



AWS183633168B
Akro-Grid Wire System

Akro-Grid Wire Systems		Shelf Dimensions (In.)			Quantity	
Model No.	Description	D	L	H	Bins	Shelves
AWS183633166	Wire Shelving w/ 33166 Grids	18	36	74	24	9
AWS183633168	Wire Shelving w/ 33168 Grids	18	36	74	18	7

Bin color code: R=Red, B=Blue, G=Grey. Specify one bin color when ordering. Dividers sold separately.

System Bins™

Convenient, 6-Bin Unit!

- Unique one-piece design, 33" wide x 5" high
- Wide hopper front allows for easy access
- Smooth surfaces are easy to fill, handle and keep clean
- Designed to fit in cabinets, drawers and on 36" wide shelving
- A cost-efficient alternative to flimsy cardboard boxes
- Optional dividers available
- Available in Red, Blue or Yellow



30312BLUE

System Bins™



One-piece unit molded for durability



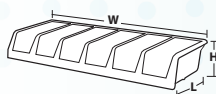
Large label area for easy content identification



Available in 12" and 18" depths to fit standard shelving

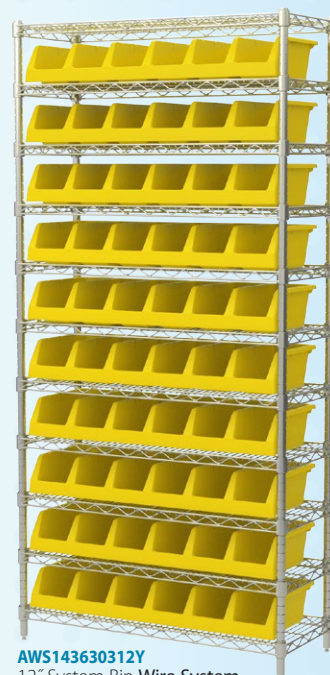
System Bins		Dimensions (In.)			Bin Compartment Dimensions (In.)**			
Model No.	Description	L	W	H	L	W	H	Ctn. Qty.
30312	12" System Bin	12	33	5	10 $\frac{3}{8}$	3 $\frac{3}{8}$	4 $\frac{15}{16}$	5
30318	18" System Bin	18	33	5	16 $\frac{3}{8}$	3 $\frac{3}{8}$	4 $\frac{15}{16}$	5
40312*	System Bin Divider (Black only)	$\frac{5}{32}$	4 $\frac{7}{8}$	4 $\frac{7}{8}$	—	—	—	6 pk.

One color per carton: Specify Red, Blue or Yellow. Order in carton quantities. *One divider per compartment, six per unit. **Bottom inside dimension per compartment.



System Bin Wire Systems		Shelf Dimensions (In.)			Quantity	
Model No.	Description	D	L	H	# of Bins	Shelves
AWS143630312	Wire Shelving w/ 30312 Bins	14	36	74	10	11
AWS183630318	Wire Shelving w/ 30318 Bins	18	36	74	10	11

Bin color code: R=Red, B=Blue, Y=Yellow. Specify one bin color when ordering.



AWS143630312Y
12" System Bin Wire System

Stak-N-Store Bins

- Stacking bins are ideal for large, bulky items
- Eliminate corrugated containers from storage areas
- Same size bins can be stacked atop one another on flooring or shelving
- Easy to label
- Available in 3 sizes and 5 colors: Red, Blue, Gray, White or Clear



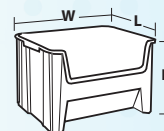
13017SCLAR



13014GREY
13014RED

Stak-N-Store Bins	Outside Dimensions (In.)			Capacity/Quantity				
	L	W	H	Cu. Ft.	Gal	Lbs.	Stacking Height	Ctn. Qty.
13014	17-1/2	10-7/8	12-1/2	.98	7.4	75	3	4
13017*	15-1/4	19-7/8	12-7/16	1.7	12.7	75	3	3
13018	17-1/2	16-1/2	12-1/2	1.6	12	75	3	2

One color per carton. Specify Red, Blue, Gray or Clear. *13017 also available in White. Order in carton quantities.



Large comfort grip handles for easy lifting



Side ribs add reinforcement for stacking stability



AWS1836SNSB
Stak-N-Store Bin Wire System

Stak-N-Store Wire Systems			Shelf Dimensions (In.)			Quantity	
Model No.	Description	Stak-N-Store Bin Colors	D	L	H	# of Bins	Shelves
AWS184813017	Wire Shelving w/ 13017 Bins	GRY, R, B, W, SC	18	48	74	9	5
AWS183613014	Wire Shelving w/ 13014 Bins	GRY, R, B, SC	18	36	74	12	5
AWS183613018	Wire Shelving w/ 13018 Bins	GRY, R, B, SC	18	36	74	8	5
AWS1836SNS	Wire Shelving w/ 13014 & 13018 Bins	GRY, R, B, SC	18	36	74	8/6†	5

Bin color code: R=Red, B=Blue, W=White, GRY=Grey, SC=Clear. Specify one bin color when ordering. †Bonus bins included.

Stackable Cabinets

- Increased storage capacity for AkroDrawers, providing more space to organize and color code inventory
- Available in 2 sizes – one for 12” AkroDrawers and one for 18” AkroDrawers
- Optional 8” high Base Stands raise cabinets off the floor
- Durable powder-coated finish
- Units can be safely stacked up to three high
- Cabinets ship fully assembled
- Color: Textured Putty



Backstop tab ensures drawers tilt out without falling



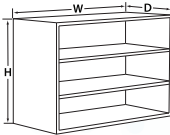
Drawers feature full-width hand grip



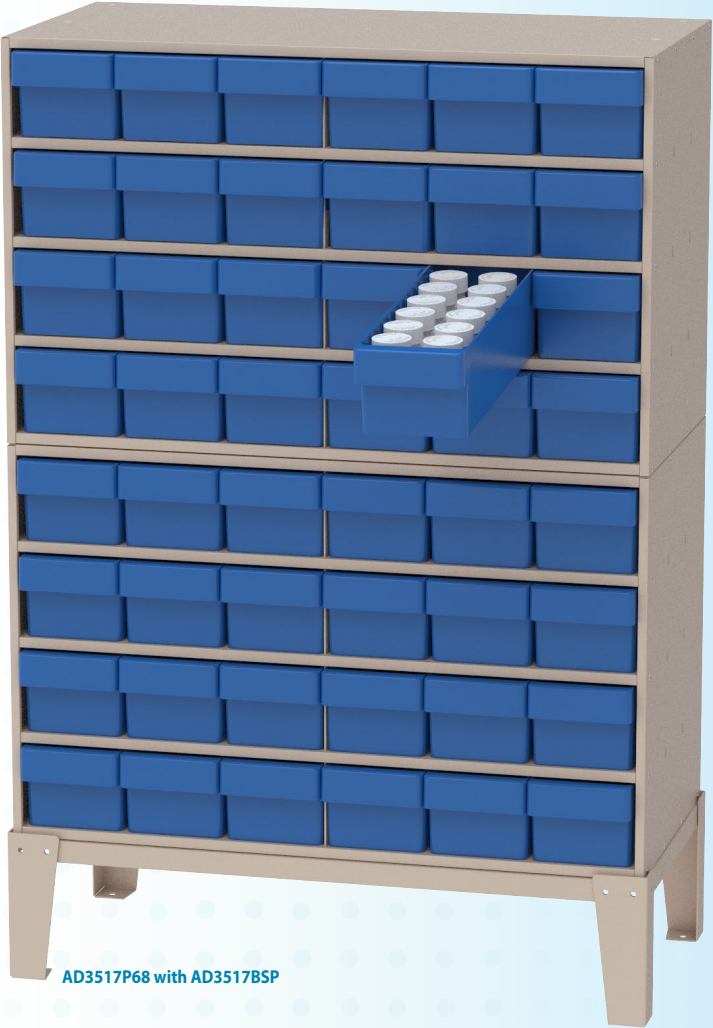
AD3511P82



AD3517P68



AkroDrawers®



AD3517P68 with AD3517BSP

Stackable Cabinet 35" W x 11" D x 22" H		Shelf Dimensions (In.)			Qty. of Drawers
Model No.	Description	D	L	H	
AD3511P	Stackable Cabinet with no AkroDrawers	11	34	4-11/16	–
AD3511PAST2	Stackable Cabinet with 31112 & 31162 AkroDrawers	11	34	4-11/16	8 / 8
AD3511P62	Stackable Cabinet with 31162 AkroDrawers	11	34	4-11/16	24
AD3511P82	Stackable Cabinet with 31182 AkroDrawers	11	34	4-11/16	16

Specify drawer color when ordering: Blue or Crystal Clear available with Putty Cabinet. One drawer color per unit.

Stackable Cabinet 35" W x 17" D x 22" H		Shelf Dimensions (In.)			Qty. of Drawers
Model No.	Description	D	L	H	
AD3517P	Stackable Cabinet with no AkroDrawers	17	34	4-11/16	–
AD3517PAST2	Stackable Cabinet with 31118 & 31168 AkroDrawers	17	34	4-11/16	8 / 8
AD3517P68	Stackable Cabinet with 31168 AkroDrawers	17	34	4-11/16	24
AD3517P88	Stackable Cabinet with 31188 AkroDrawers	17	34	4-11/16	16
AD3517PAST	Stackable Cabinet with 31168 & 31188 AkroDrawers	17	34	4-11/16	12 / 8

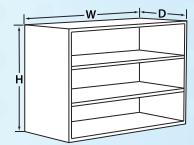
Specify drawer color when ordering: Blue or Crystal Clear available with Putty Cabinet. One drawer color per unit.

Optional Base Stands for Stackable Cabinets		Dimensions (In.)		
Model No.	Description	W	D	H
AD3511BSP	Base Stand for 11" Stackable Cabinet	35-1/4	11-1/4	8
AD3517BSP	Base Stand for 17" Stackable Cabinet	35-1/4	17-1/4	8


AD1811P62

Super Modular Cabinets

- Organize your AkroDrawers on specially designed stackable or wall-mountable cabinets
- AkroDrawers fit snugly on shelves so open top is protected from dust and debris
- Drawers hang securely from shelves by sturdy backstop tab
- 11" cabinets can be mounted to wall
- Durable powder-coated finish
- Weight capacity: 60 lbs. 18" Modular Cabinets; 75 lbs. 24" Modular Cabinets; Combined stack weight capacity: 100 lbs.
- Color: Textured Putty



Super Modular Cabinets 18" W x 11" D x 16½" H		Shelf Dimensions (In.)			Qty. of Drawers
Model No.	Description	D	L	H	
AD1811P	Small Cabinet with no AkroDrawers	11	17	4-19/32	—
AD1811P62	Small Cabinet with 31162 AkroDrawers	11	17	4-19/32	9
AD1811P82	Small Cabinet with 31182 AkroDrawers	11	17	4-19/32	6
AD1811PAST	Small Cabinet with 31162 and 31182 AkroDrawers	11	17	4-19/32	6 / 2

Specify drawer color when ordering: Blue or Crystal Clear available with Putty Cabinet. One drawer color per unit.

Super Modular Cabinets 23" W x 11" D x 16½" H		Shelf Dimensions (In.)			Qty. of Drawers
Model No.	Description	D	L	H	
AD2311P	Medium Cabinet with no AkroDrawers	11	22	4-19/32	—
AD2311P62	Medium Cabinet with 31162 AkroDrawers	11	22	4-19/32	12

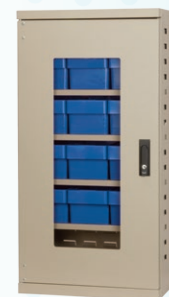
Specify drawer color when ordering: Blue or Crystal Clear available with Putty Cabinet. One drawer color per unit.

Super Modular Cabinets 18" W x 17" D x 16½" H		Shelf Dimensions (In.)			Qty. of Drawers
Model No.	Description	D	L	H	
AD1817P	17" Deep Cabinet with no AkroDrawers	17	17	4-19/32	—
AD1817P68	17" Deep Cabinet with 31168 AkroDrawers	17	17	4-19/32	9
AD1817P88	17" Deep Cabinet with 31188 AkroDrawers	17	17	4-19/32	6
AD1817PAST	17" Deep Cabinet with 31168 and 31188 AkroDrawers	17	17	4-19/32	6 / 2

Specify drawer color when ordering: Blue or Crystal Clear available with Putty Cabinet. One drawer color per unit.

Secure Mini-Cabinets

- **Lockable cabinet** provides secure storage for sensitive supplies
- Wall mountable
- Features four adjustable shelves with fully louvered panel built into back for hanging AkroBins®
- Available with a quick-view door or solid door
- Foam gasket around door frame seals out dust
- 18-gauge steel cabinet has a welded frame and durable powder-coated finish
- Ships fully assembled


ACQV4P62BLU

ACS4P82CRY

Quick-View Secure Mini-Cabinet 19¼" W x 13¼" D x 38" H		Dimensions (In.)			Qty. of Drawers
Model No.	Description	L	W	H	
ACQV4P	Secure Mini-Cabinet, Quick-View Door, no AkroDrawers	—	—	—	—
ACQV4P42	Secure Mini-Cabinet, Quick-View Door with 31142 AkroDrawers	11-5/8	3-3/4	4-5/8	16
ACQV4P62	Secure Mini-Cabinet, Quick-View Door with 31162 AkroDrawers	11-5/8	5-9/16	4-5/8	12
ACQV4P82	Secure Mini-Cabinet, Quick-View Door with 31182 AkroDrawers	11-5/8	8-3/8	4-5/8	8
ACQV4PAST	Secure Mini-Cabinet, Quick-View Door with 31142, 31162 & 31182 AkroDrawers	See Above			4 / 6 / 2

Specify drawer color when ordering: Red, Blue, Yellow, Gray or Crystal Clear available with Gray Cabinet. Blue or Crystal Clear available with Putty Cabinet. One drawer color per unit.

Steel Door Secure Mini-Cabinet 19¼" W x 13¼" D x 38" H		Dimensions (In.)			Qty. of Drawers
Model No.	Description	L	W	H	
ACS4P	Secure Mini-Cabinet, Steel Door, no AkroDrawers	—	—	—	—
ACS4P42	Secure Mini-Cabinet, Steel Door with 31142 AkroDrawers	11-5/8	3-3/4	4-5/8	16
ACS4P62	Secure Mini-Cabinet, Steel Door with 31162 AkroDrawers	11-5/8	5-9/16	4-5/8	12
ACS4P82	Secure Mini-Cabinet, Steel Door with 31182 AkroDrawers	11-5/8	8-3/8	4-5/8	8
ACS4PAST	Secure Mini-Cabinet, Steel Door with 31142, 31162 & 31182 AkroDrawers	See Above			4 / 6 / 2

Specify drawer color when ordering: Red, Blue, Yellow, Gray or Crystal Clear available with Gray Cabinet. Blue or Crystal Clear available with Putty Cabinet. One drawer color per unit.

Standard Lockable Bin Cabinets

- All-Welded Bin Storage Cabinets
- Made of 16-gauge steel
- Adjustable shelves hold up to 300 lbs. each
- Louvered back wall panel
- Keyed handle with 3-point locking system. 2 keys included
- Color: Putty



Keyed handle
(2 keys included)

AkroBin Cabinet 36" W x 24" D x 78" H

Model No.	Description	Bin Model No.
AC3624PUT	Cabinet w/ Louvered Panels on Back & Doors, no Bins	-
AC3624YPUT	Cabinet w/ Louvered Panels on Back & Doors with Assorted Yellow AkroBins	30210YELLO - 48; 30220YELLO - 48; 30230YELLO - 24; 30240YELLO - 12; 30250YELLO - 6
AC3624YDPUT	Cabinet w/ Louvered Panels on Back & Doors with Assorted Yellow AkroBins	30232YELLO - 16; 30242YELLO - 16; 30230YELLO - 24; 30240YELLO - 12; 30250YELLO - 6

AkroBin Cabinet with Shelves 36" W x 24" D x 78" H

Model No.	Description	Bin Model No.
AC36243ASPUT	Cabinet w/ 3 Shelves, Louvered Panels on Back & Doors, no Bins	-
AC3624Y3ASPUT	Cabinet w/ 3 Shelves, Louvered Panels on Back & Doors, with Assorted Yellow AkroBins	30210YELLO - 48; 30220YELLO - 48; 30250YELLO - 6
AC3624YD3ASPUT	Cabinet w/ 3 Shelves, Louvered Panels on Back & Doors, with Assorted Yellow AkroBins	30232YELLO - 16; 30242YELLO - 16; 30250YELLO - 6



AC3624YD3ASPUT

Quick-View Security Bin Cabinets

- Lexan™ door panels allow easy viewing, even when cabinet is locked
- Keyed handle with 3-point locking system for total security, preventing damage or theft of sensitive supplies
- Purchase as complete kit using AkroBins® or TiltView® Bins
- All-welded 16-gauge steel construction
- Color: Beige



AC3618QVTVA1



AC3618QV250



AC3618QV250CLAR



Keyed handle
(2 keys included)



AC3618QV240

Quick-View Security Bin Cabinet 36" W x 18" D x 78" H		TiltView Bin Quantity					AkroBin Quantity
Model No.	Description	06702	06703	06704	06705	06706	302305CLAR
AC3618QVTVA1	Beige Cabinet w/ Quick View Doors, Louvered Back, TiltView Bins, AkroBins	-	2	3	3	1	24
AC3618QVTVA2	Beige Cabinet w/ Quick View Doors, Louvered Back, TiltView Bins, AkroBins	1	1	6	1	-	24
AC3618QV	Beige Cabinet w/ Quick View Doors	-	-	-	-	-	-

All packages include TVCLIPS needed to hang bins in cabinet.

Quick-View Security Bin Cabinet 36" W x 18" D x 78" H			Bin Dimensions (In.)			
Model No.	Description	AkroBin Model No.	L	W	H	Qty. of Bins
AC3618QV240	Beige Cabinet w/ Quick View Doors, Louvered Back, with Yellow AkroBins	30240YELLO	14¾	8¼	7	36
AC3618QV250	Beige Cabinet w/ Quick View Doors, Louvered Back, with Yellow AkroBins	30250YELLO	14¾	16½	7	18
AC3618QV250CLAR	Beige Cabinet w/ Quick View Doors, Louvered Back, with Clear AkroBins	302505CLAR	14¾	16½	7	18

Keyless Electronic Locking Systems

- **Push-button keyless entry into cabinets for additional security**
- Set your own codes for controlled access; assign a supervisor code and up to 19 separate user codes. Codes can also be assigned to give one-time access to the cabinet
- Limit access to inventory to authorized employees - great for inventory management
- Secure Mini-Cabinet available with 3-Point Locking System for added security



- 75,000 cycles with a low battery indicator
- Easy-to-clean membrane covered keypad



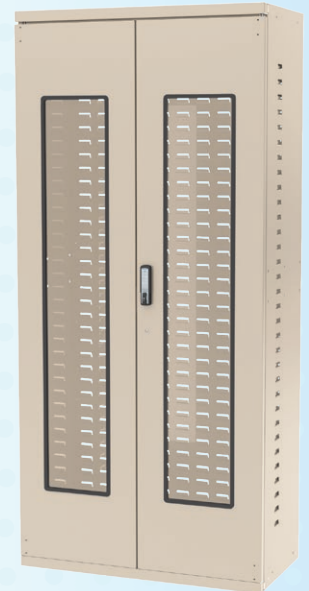
ACS4P1PEL



ACQV4P3PEL



AC3618PUTEL



AC3618QVEL

Quick-View Secure Mini-Cabinet 19 1/4" W x 13 1/4" D x 38" H

Model No.	Description	Cabinet Color
ACQV4P1PEL	Mini-Cabinet with Single point locking - Quick-View doors	Textured Putty
ACQV4P3PEL	Mini-Cabinet with 3-point locking - Quick-View doors	Textured Putty

Steel Door Secure Mini-Cabinet 19 1/4" W x 13 1/4" D x 38" H

Model No.	Description	Cabinet Color
ACS4P1PEL	Mini-Cabinet with Single point locking - solid doors	Textured Putty
ACS4P3PEL	Mini-Cabinet with 3-point locking - solid doors	Textured Putty

AkroBin Cabinet 36" W x 18" D x 78" H

Model No.	Description	Cabinet Color
AC3618PUTEL	Cabinet with louvered panels on back walls - solid doors	Putty
AC3618QVEL	Cabinet with louvered panels on back walls - Quick-View doors	Beige

AkroBin Cabinet 36" W x 24" D x 78" H

Model No.	Description	Cabinet Color
AC3624PUTEL	Cabinet with louvered panels on back walls - solid doors	Putty
AC3624TEXWHEL	Cabinet with louvered panels on back walls - solid doors	Textured White



AC3624ELPUT



AC3624TEXWHEL

TiltView®

- Space-saving system will improve organization and efficiency by keeping supplies in view
- Can be used on a desktop, attached to steel rails, frames or louvered panels, and are wall mountable
- Cabinets are made of high-impact polystyrene; bins are made of polystyrene (GPS)
- Molded-in label holder (card stock labels included)
- Neutral Stone color is ideal for any environment
- 06702 slides apart to form two separate bins
- Available in 6 sizes
- Mobilize your supplies with the TiltView Stack Cart (see page 30)



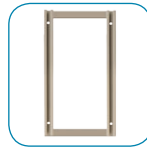
06704



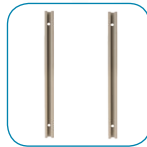
Dividers
Optional dividers (for 3-Bin and 4-Bin models) expand sorting options



Locking Rod
Keeps contents secure; rods flip down to keep the bins from opening



Wall Mount Frames
16-gauge steel frames make a system where bin units are easily stacked and removed



Rail Systems
16-gauge steel rails convert bins into customizable hanging wall systems



Hanging Clips
Attach TiltView Bins to Louvered Racks, Panels, Rail Racks or Bin Cabinets



06702



06703



06704



06705



06706



06709

TiltView Bins		Dimensions (In.)			Capacity/Qty.		Dividers
Model No.	Description	L	W	H	Ctn. Qty.	Capacity Lbs.	
06702	2-Bin TiltView	12-5/16	23-5/8	14	1	30	—
06703	3-Bin TiltView	7-7/8	23-5/8	9-7/16	1	30	40703 (3/Pk)
06704	4-Bin TiltView	6-3/4	23-5/8	8-3/16	1	25	40704 (4/Pk)
06705	5-Bin TiltView	5-3/8	23-5/8	6-1/2	1	20	—
06706	6-Bin TiltView	3-3/4	23-5/8	4-1/2	1	15	—
06709	9-Bin TiltView	2-1/2	23-5/8	3-3/16	1	5	—



TiltView Rails		Dimensions (In.)			Number of Bins to Fit Each Rail Set					
Model No.	Description	L	W	H	06702	06703	06704	06705	06706	06709
TV24R	24" TiltView Rails	1-1/8	1-3/8	24-1/8	1	2	3	3	5	8
TV48R	48" TiltView Rails	1-1/8	1-3/8	48-1/8	3	5	6	7	10	16
TV70R	70" TiltView Rails	1-1/8	1-3/8	70-1/8	5	7	8	10	15	23

One Rail Set = 2 Rails. Bins sold separately; mounting bins requires hardware pack.

TiltView Frames		Dimensions (In.)			Number of Bins to Fit Each Frame					
Model No.	Description	L	W	H	06702	06703	06704	06705	06706	06709
TV24F	24" TiltView Frames	1-1/8	1-3/8	24-1/8	1	2	3	3	5	8
TV48F	48" TiltView Frames	1-1/8	1-3/8	48-1/8	3	5	6	7	10	16
TV70F	70" TiltView Frames	1-1/8	1-3/8	70-1/8	5	7	8	10	15	23

Bins sold separately; mounting bins requires hardware pack.

TiltView Accessories		Ctn. Qty.
Model No.	Description	
TVHWR	TiltView Hardware Pack	1 Set
TVLRA	TiltView Locking Rod	2 Pk.
TVLRL	TiltView Locking Rod	12 Pk.
TVCLIP	TiltView Hanging Clip	2 Pk.



30553 with 06709, 06706, 06704

19-Series Steel Storage Cabinets

- Great for organizing small items such as dental instruments or lab supplies
- Helps to keep inventory accurate and dust-free
- Clear windows provide easy visibility of contents
- Stackable, wall mountable or can be used on 36" wide shelving
- Steel frame with full steel shelf under each row of drawers
- One model available with a locking door
- 5 drawer colors: Red, Blue, Black, Yellow or Gray



19109 has a lockable door



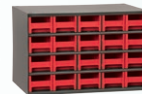
Drawers available separately for use as **Unit Dose Bins**



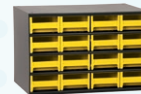
19715



19228



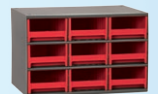
19320



19416



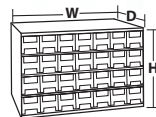
19715



19909



98325 Storage-Go-Round
Securely holds (20) 19-Series Cabinets and as many as 560 drawers in less than 1 square yard of floor space. Holds up to 1,000 lbs. of supplies. Swing diameter 43 3/4".



19-Series Heavy-Duty Steel Cabinets			Drawer Dimensions (In.)				Accessories	
Model No.	Description	Drawers Per Cabinet*	W	H	D	Ctn. Qty.	Drawer Model No.	Dividers 25/Pkg. Model No.
19228	Steel Storage Cabinet*	28	2-3/16	2-1/16	10-9/16	1	20228	40228
19320	Steel Storage Cabinet*	20	3-3/16	2-1/16	10-9/16	1	20320	40320
19416	Steel Storage Cabinet*	16	4	2-1/8	10-9/16	1	20416	40416
19715	Steel Storage Cabinet*	15	3-3/16	3-1/16	10-9/16	1	20715	40715
19909	Steel Storage Cabinet*	9	5-3/16	3-1/16	10-9/16	1	20909	40909
19109	Storage Cabinet w/ Locking Door	9	5-3/16	3-1/16	10-9/16	1	20909	40909

One drawer color per cabinet. Specify Red, Blue, Yellow, Gray or Black when ordering. * Two removable dividers and one label per drawer included. * Available with a locking door when ordered in quantities of 50 or more.

Storage-Go-Round		Assembled Dimensions (In.)			Compatible with Models*
Model No.	Description	L	W	H	
98325	Storage-Go-Round with turntable base	31	31	60	19228, 19320, 19416, 19715, 19909

Assembly required. * 19-Series Cabinets sold separately.

Heavy-Duty Lockable Bin Cabinets

- All-welded 16-gauge steel construction with 7-gauge reinforced corners
- Heavy-duty steel padlock-ready handle ensures **complete security** to prevent damage or theft of sensitive supplies
- Purchase as complete kit using AkroBins® or TiltView® Bins
- Louvered doors expand organizing options using AkroBins®
- Available in Beige or Gray



Padlock-ready handle



HD4824TVBE

UP TO
2000
LBS.



HD4824ACH

Heavy-Duty Cabinet 48" W x 24" D x 72" H		TiltView Bin Quantity				AkroBin Quantity
Model No.	Description	06702	06704	06705	06706	30230SCLAR
HD4824TVABBE	Beige Cabinet w/TiltView Bins, AkroBins	4	4	4	4	66
HD4824TVABCH	Charcoal Cabinet w/TiltView Bins, AkroBins	4	4	4	4	66
HD4824TVBE	Beige Cabinet w/TiltView Bins	4	4	4	4	—
HD4824TVCH	Charcoal Cabinet w/TiltView Bins	4	4	4	4	—
HD4824ABE	Beige Cabinet	—	—	—	—	—
HD4824ACH	Charcoal Cabinet	—	—	—	—	—

All packages include TWCLIPs needed to hang bins in cabinet.

Louvered Panels, Floor Racks & Bench Racks

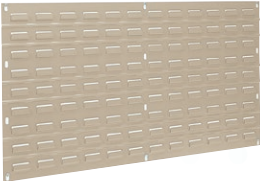
- Louvered Panels securely support AkroBins®, InSight® Bins, Universal Bins or Steel Cabinets (sold separately)
- Heavy-duty 16-gauge, cold-rolled steel for strength and durability
- Wall-mounted units keep items out of the way, off the floor and off the work table
- Floor racks can be placed near work areas to improve productivity
- Mobile Kits mobilize racks; easily relocate supplies without unloading and reloading bins
- Select models available in Beige, Gray or Textured White



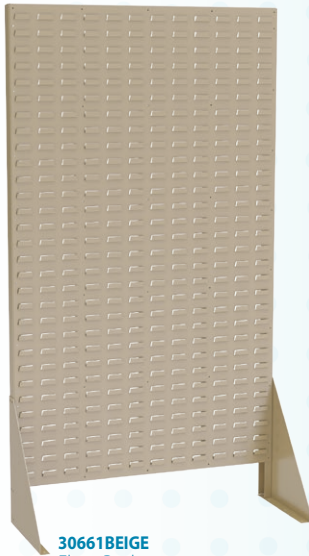
98600BEIGE
Bench Rack



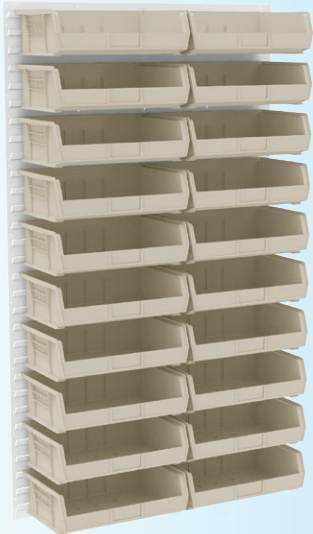
30632BEIGE
Single Row Louvered Panel



30636BEIGE
Louvered Wall Panel



30661BEIGE
Floor Rack



30161TEXWHT
Louvered Wall Panel & 30255BEIGE AkroBins

AkroBin Louvered Hanging Systems			Dimensions (In.)				AkroBin Quantity to Fit Louvered Hanging System – AkroBins Model No.														
Model No.	Description	Ctn. Qty	L	W	H	Rack Wt. Cap. (lbs.)	30210	30220	30224	30230	30234	30235	30237	30239	30240	30250	30255	30260	30265	30270	30320
30618BEIGE + #	Louvered Wall Panel	4	18	5/16	19	160	16	16	12	9	9	3	6	4	4	2	3	1	2	1	–
30632BEIGE + #	Single Row Louvered Panel	2	2	31-15/16	5/16	80	7	7	7	5	5	2	5	3	3	1	1	2	3	1	–
30636BEIGE + #	Louvered Wall Panel	4	35-3/4	5/16	19	160	32	32	24	18	18	9	15	8	8	4	6	3	4	2	3
30161BEIGE+ #	Louvered Wall Panel	1	36	5/16	61	1000	120	120	80	60	60	30	50	28	28	14	20	15	24	10	10
30118BEIGE + #	Louvered Wall Panel	1	18	5/16	61	500	60	60	40	30	30	10	20	14	14	7	10	5	12	5	–
30661BEIGE+	Single-Sided Rivet Floor Rack	1	36-3/16	13-1/2	66-3/8	500	120	120	80	60	60	30	50	28	28	14	20	15	24	10	10
30676BEIGE+	Double-Sided Rivet Floor Rack	1	36-3/16	25	66-3/8	1000	240	240	160	120	120	60	100	56	56	28	40	30	48	20	20
98600BEIGE+	Bench Rack	1	27-15/16	8-9/16	19-9/16	120	30	30	18	12	12	6	12	6	6	2	3	2	6	–	–
LVDMOBILE	Gray Mobile Kit for 30676	1	–	–	–	1500	–	–	–	–	–	–	–	–	–	–	–	–	–	–	–
30661DOLLYBE+	Floor Rack Dolly for 30661	1	37	24	6	500	–	–	–	–	–	–	–	–	–	–	–	–	–	–	–

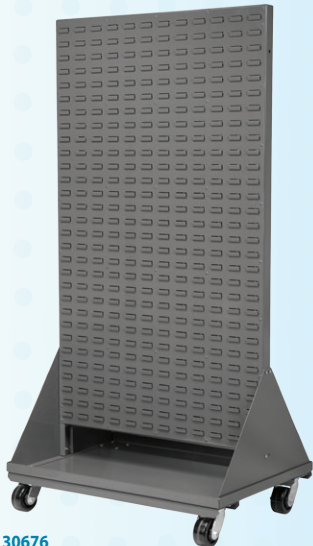
+Also available in Gray. #Also available in Textured White. Specify color when ordering. Beige = BEIGE, White = TEXWHT, GY = Gray.



30661 and 30661DOLLY with AkroBins



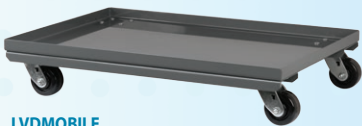
30661
Floor Rack & 30661DOLLY



30676
Floor Rack & LVDMOBILE



30661DOLLY



LVDMOBILE

ReadySpace® Storage System

Ready, Set, Organize!®

- Customer-friendly appearance
- Keep supplies organized and readily available
- Utilizes valuable floor or wall space that might otherwise be wasted
- Bench and Mobile Floor Units can create a privacy wall where needed
- Color: White Powder-Coated Finish



ReadySpace Wall Unit Packages		Capacity/Qty.		
Model No.	Description (L x W x H)	No. of Ctns.	Wt. Cap. (lbs.)	Bin Qty.
30536	37-1/2" x 1-3/4" x 25-3/8", Panel	1	50	N/A
30536210S	Unit with 30210STONE Bins	3	50	48
30536220S	Unit with 30220STONE Bins	3	50	48
30536230S	Unit with 30230STONE Bins	3	50	24
30536235S	Unit with 30235STONE Bins	3	50	12
30536320S	Unit with 30320STONE Bins	2	50	4
30536A1	ReadySpace Wall Unit with 305A1	4	50	48
30536A3	ReadySpace Wall Unit with 305A3	4	50	48
30536A5	ReadySpace Wall Unit with 305A5	5	50	48
30536B1	ReadySpace Wall Unit with 305B1	3	50	24

ReadySpace Mobile Floor Unit Packages		Capacity/Qty.		
Model No.	Description (L x W x H)	No. of Ctns.	Wt. Cap. (lbs.)	Bin Qty.
30553	24-5/8" x 23" x 52"	1	150	N/A
30553210S	Unit with 30210STONE Bins	6	150	110
30553220S	Unit with 30220STONE Bins	6	150	110
30553230S	Unit with 30230STONE Bins	6	150	56
30553235S	Unit with 30235STONE Bins	6	150	28
30553A1	ReadySpace Mobile Floor Unit with 305A1	9	150	110
30553A3	ReadySpace Mobile Floor Unit with 305A3	9	150	110
30553A5	ReadySpace Mobile Floor Unit with 305A5	11	150	110
30553B1	ReadySpace Mobile Floor Unit with 305B1	7	150	56
30553LF	Leveling Feet for Floor Unit	—	150	—

ReadySpace Bench Unit Packages		Capacity/Qty.		
Model No.	Description	No. of Ctns.	Wt. Cap. (lbs.)	Bin Qty.
98536	37-3/4" x 12" x 26-3/8" (Single)	1	100	N/A
98536210SS	Single-Sided Bench Unit with 30210STONE Bins	3	100	48
98536220SS	Single-Sided Bench Unit with 30220STONE Bins	3	100	48
98536230SS	Single-Sided Bench Unit with 30230STONE Bins	3	100	24
98536235SS	Single-Sided Bench Unit with 30235STONE Bins	3	100	12
98536320SS	Single-Sided Bench Unit with 30320STONE Bins	2	100	4
98536	37-3/4" x 22-1/2" x 26-3/8" (Double)	1	100	N/A
98536210SD	Double-Sided Bench Unit with 30210STONE Bins	5	100	96
98536220SD	Double-Sided Bench Unit with 30220STONE Bins	5	100	96
98536230SD	Double-Sided Bench Unit with 30230STONE Bins	5	100	48
98536235SD	Double-Sided Bench Unit with 30235STONE Bins	5	100	24
98536320SD	Double-Sided Bench Unit with 30320STONE Bins	3	100	8

Louvered Panel Hooks

Hooks for Louvered Panels

- Customize storage for tools and supplies such as rolls of athletic strapping tape, hoses and tubing, therapy bands and more
- Chrome finish



Louvered Panel Hooks		Capacity/Qty.	
Model No.	Description	Wt. Cap. (lbs.)	Pkg. Qty.
LPP6SP	Straight Post - 6" Long	10	6
LPP6WL	Wide Loop - 6" Long - 3" Long x 2-3/4" Wide	20	6
LPP6NL	Narrow Loop - 6" Long x 1-1/2" Wide	20	6
LPP3SP	Straight Post - 3" Long	10	6
LPP3WL	Wide Loop - 3" Long x 2-3/4" Wide	20	6
LPP3NL	Narrow Loop - 3" Long x 1-1/2" Wide	20	6

Wire Shelving Starter Units

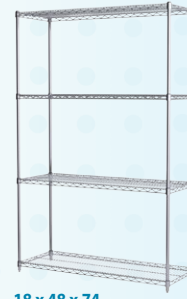
- **Meet compliance regulations** by getting your supplies up off the floor with Wire Shelving Units
- Heavy-duty wire shelving units prevent dust accumulation and improve visibility of stored items. Assembles in minutes, no tools required
- Shelf Weight Capacity: 800 lbs. for shelf lengths up to 48", 600 lbs. for shelf lengths over 48"
- Units Include: 4 - chrome wire shelves with Quick-Adjust Post Sleeves, 4 - posts with Leveling Feet, 1 - 8 pack of "S" Hooks for creating continuous shelving runs or 90° angles



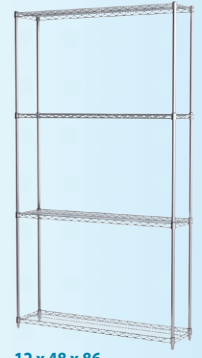
36 x 48 x 54



24 x 48 x 63



18 x 48 x 74



12 x 48 x 86



Wire Shelving Starter Units - 54" High		Components				
Model No.	Description	Post Qty.	Shelf Qty.	"S" Hook Qty.	Unit Weight	Weight Cap.
AWS541224SU	54" High 12" x 24" Starter Unit	4	4	1 - 8 Pack	30	3200
AWS541236SU	54" High 12" x 36" Starter Unit	4	4	1 - 8 Pack	38	3200
AWS541248SU	54" High 12" x 48" Starter Unit	4	4	1 - 8 Pack	45	3200
AWS541436SU	54" High 14" x 36" Starter Unit	4	4	1 - 8 Pack	41	3200
AWS541824SU	54" High 18" x 24" Starter Unit	4	4	1 - 8 Pack	36	3200
AWS541830SU	54" High 18" x 30" Starter Unit	4	4	1 - 8 Pack	40	3200
AWS541836SU	54" High 18" x 36" Starter Unit	4	4	1 - 8 Pack	45	3200
AWS541848SU	54" High 18" x 48" Starter Unit	4	4	1 - 8 Pack	57	3200
AWS541860SU	54" High 18" x 60" Starter Unit	4	4	1 - 8 Pack	41	2400
AWS541872SU	54" High 18" x 72" Starter Unit	4	4	1 - 8 Pack	46	2400
AWS542424SU	54" High 24" x 24" Starter Unit	4	4	1 - 8 Pack	42	2400
AWS542436SU	54" High 24" x 36" Starter Unit	4	4	1 - 8 Pack	56	2400
AWS542448SU	54" High 24" x 48" Starter Unit	4	4	1 - 8 Pack	68	2400
AWS542460SU	54" High 24" x 60" Starter Unit	4	4	1 - 8 Pack	50	2400
AWS542472SU	54" High 24" x 72" Starter Unit	4	4	1 - 8 Pack	57	2400
AWS543648SU	54" High 36" x 48" Starter Unit	4	4	1 - 8 Pack	55	2400
AWS543660SU	54" High 36" x 60" Starter Unit	4	4	1 - 8 Pack	69	2400
AWS543672SU	54" High 36" x 72" Starter Unit	4	4	1 - 8 Pack	80	2400

Wire Shelving Starter Units - 74" High		Components				
Model No.	Description	Post Qty.	Shelf Qty.	"S" Hook Qty.	Unit Weight	Weight Cap.
AWS741224SU	74" High 12" x 24" Starter Unit	4	4	1 - 8 Pack	34	3200
AWS741236SU	74" High 12" x 36" Starter Unit	4	4	1 - 8 Pack	42	3200
AWS741248SU	74" High 12" x 48" Starter Unit	4	4	1 - 8 Pack	49	3200
AWS741436SU	74" High 14" x 36" Starter Unit	4	4	1 - 8 Pack	45	3200
AWS741824SU	74" High 18" x 24" Starter Unit	4	4	1 - 8 Pack	40	3200
AWS741830SU	74" High 18" x 30" Starter Unit	4	4	1 - 8 Pack	44	3200
AWS741836SU	74" High 18" x 36" Starter Unit	4	4	1 - 8 Pack	49	3200
AWS741848SU	74" High 18" x 48" Starter Unit	4	4	1 - 8 Pack	61	3200
AWS741860SU	74" High 18" x 60" Starter Unit	4	4	1 - 8 Pack	45	2400
AWS741872SU	74" High 18" x 72" Starter Unit	4	4	1 - 8 Pack	50	2400
AWS742424SU	74" High 24" x 24" Starter Unit	4	4	1 - 8 Pack	46	2400
AWS742436SU	74" High 24" x 36" Starter Unit	4	4	1 - 8 Pack	60	2400
AWS742448SU	74" High 24" x 48" Starter Unit	4	4	1 - 8 Pack	72	2400
AWS742460SU	74" High 24" x 60" Starter Unit	4	4	1 - 8 Pack	54	2400
AWS742472SU	74" High 24" x 72" Starter Unit	4	4	1 - 8 Pack	61	2400
AWS743648SU	74" High 36" x 48" Starter Unit	4	4	1 - 8 Pack	59	2400
AWS743660SU	74" High 36" x 60" Starter Unit	4	4	1 - 8 Pack	73	2400
AWS743672SU	74" High 36" x 72" Starter Unit	4	4	1 - 8 Pack	84	2400

Wire Shelving Starter Units - 63" High		Components				
Model No.	Description	Post Qty.	Shelf Qty.	"S" Hook Qty.	Unit Weight	Weight Cap.
AWS631224SU	63" High 12" x 24" Starter Unit	4	4	1 - 8 Pack	32	3200
AWS631236SU	63" High 12" x 36" Starter Unit	4	4	1 - 8 Pack	40	3200
AWS631248SU	63" High 12" x 48" Starter Unit	4	4	1 - 8 Pack	47	3200
AWS631436SU	63" High 14" x 36" Starter Unit	4	4	1 - 8 Pack	43	3200
AWS631824SU	63" High 18" x 24" Starter Unit	4	4	1 - 8 Pack	38	3200
AWS631830SU	63" High 18" x 30" Starter Unit	4	4	1 - 8 Pack	42	3200
AWS631836SU	63" High 18" x 36" Starter Unit	4	4	1 - 8 Pack	47	3200
AWS631848SU	63" High 18" x 48" Starter Unit	4	4	1 - 8 Pack	59	3200
AWS631860SU	63" High 18" x 60" Starter Unit	4	4	1 - 8 Pack	43	2400
AWS631872SU	63" High 18" x 72" Starter Unit	4	4	1 - 8 Pack	48	2400
AWS632424SU	63" High 24" x 24" Starter Unit	4	4	1 - 8 Pack	44	2400
AWS632436SU	63" High 24" x 36" Starter Unit	4	4	1 - 8 Pack	58	2400
AWS632448SU	63" High 24" x 48" Starter Unit	4	4	1 - 8 Pack	70	2400
AWS632460SU	63" High 24" x 60" Starter Unit	4	4	1 - 8 Pack	52	2400
AWS632472SU	63" High 24" x 72" Starter Unit	4	4	1 - 8 Pack	59	2400
AWS633648SU	63" High 36" x 48" Starter Unit	4	4	1 - 8 Pack	57	2400
AWS633660SU	63" High 36" x 60" Starter Unit	4	4	1 - 8 Pack	71	2400
AWS633672SU	63" High 36" x 72" Starter Unit	4	4	1 - 8 Pack	82	2400

Wire Shelving Starter Units - 86" High		Components				
Model No.	Description	Post Qty.	Shelf Qty.	"S" Hook Qty.	Unit Weight	Weight Cap.
AWS861224SU	86" High 12" x 24" Starter Unit	4	4	1 - 8 Pack	35	3200
AWS861236SU	86" High 12" x 36" Starter Unit	4	4	1 - 8 Pack	43	3200
AWS861248SU	86" High 12" x 48" Starter Unit	4	4	1 - 8 Pack	50	3200
AWS861436SU	86" High 14" x 36" Starter Unit	4	4	1 - 8 Pack	46	3200
AWS861824SU	86" High 18" x 24" Starter Unit	4	4	1 - 8 Pack	41	3200
AWS861830SU	86" High 18" x 30" Starter Unit	4	4	1 - 8 Pack	45	3200
AWS861836SU	86" High 18" x 36" Starter Unit	4	4	1 - 8 Pack	50	3200
AWS861848SU	86" High 18" x 48" Starter Unit	4	4	1 - 8 Pack	62	3200
AWS861860SU	86" High 18" x 60" Starter Unit	4	4	1 - 8 Pack	46	2400
AWS861872SU	86" High 18" x 72" Starter Unit	4	4	1 - 8 Pack	51	2400
AWS862424SU	86" High 24" x 24" Starter Unit	4	4	1 - 8 Pack	47	2400
AWS862436SU	86" High 24" x 36" Starter Unit	4	4	1 - 8 Pack	61	2400
AWS862448SU	86" High 24" x 48" Starter Unit	4	4	1 - 8 Pack	73	2400
AWS862460SU	86" High 24" x 60" Starter Unit	4	4	1 - 8 Pack	55	2400
AWS862472SU	86" High 24" x 72" Starter Unit	4	4	1 - 8 Pack	62	2400
AWS863648SU	86" High 36" x 48" Starter Unit	4	4	1 - 8 Pack	60	2400
AWS863660SU	86" High 36" x 60" Starter Unit	4	4	1 - 8 Pack	74	2400
AWS863672SU	86" High 36" x 72" Starter Unit	4	4	1 - 8 Pack	85	2400

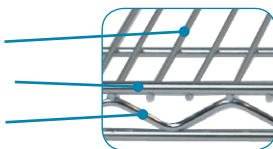
Wire Shelving Components

Order the exact size shelves, posts and custom components to fit your space requirements!

Deck Wire = 3.3mm

Frame Wire = 6.0mm

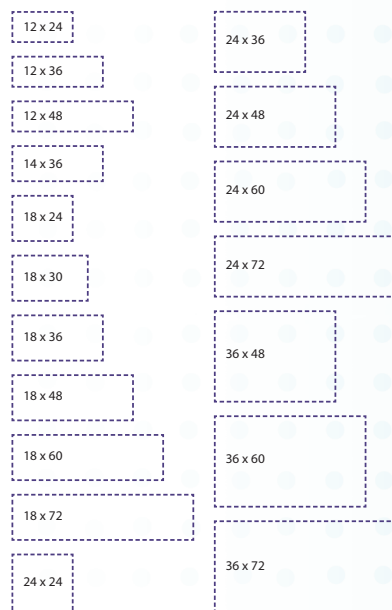
Truss Wire = 4.5mm



Horizontal Shelves

- NSF-Certified Wire Shelves - Plastic Quick-Adjust Clips included with each shelf. (replacement part: AWCLIP4PK).
- Weight Capacity (evenly distributed) per shelf: Lengths up to 48" = 800 lbs. Lengths over 48" = 600 lbs.
- Weight Capacity (evenly distributed) per stationary shelving unit = 2,000 lbs.
- Shelving can be assembled in minutes and no special tools are required

Available Shelf Sizes



Upright Posts

- Posts include a Leveling Foot to compensate for uneven surfaces. (Replacement part: AWFOOTLEVEL4PK)
- All posts include a plastic post top cap and a 3/8"-16 threaded base insert for installing feet and casters
- Durable nickel-chrome finish

Slanted Shelves

- Plastic Quick-Adjust Clips included with each shelf. (replacement part: AWCLIP4PK).
- Weight Capacity (evenly distributed) per shelf = 400 lbs.
- Shelf Angle (installed) = 27°
- Use a 3-sided frame to support bottom slanted shelf and standard wire shelf for top shelf
- Durable nickel-chrome finish

3-Sided Frame

- Adds support to slanted shelving units where full shelf is not required
- Durable nickel-chrome finish



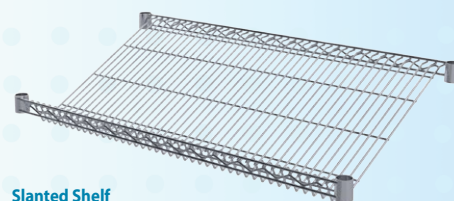
Shelf Posts



Posts include Leveling Foot

Wire Shelving Posts - Chrome

Model No.	Description	Ctn. Qty.
AWP34UPRIGHT	34" Shelf Post	4
AWP54UPRIGHT	54" Shelf Post	4
AWP63UPRIGHT	63" Shelf Post	4
AWP74UPRIGHT	74" Shelf Post	4
AWP86UPRIGHT	86" Shelf Post	4
AWP96UPRIGHT	96" Shelf Post	4



Slanted Shelf

Slanted Wire Shelves - Chrome

Model No.	Description	Ctn. Qty.
AWS1836SL	18" x 36" Slanted Wire Shelf	4
AWS1848SL	18" x 48" Slanted Wire Shelf	4
AWS2436SL	24" x 36" Slanted Wire Shelf	4
AWS2448SL	24" x 48" Slanted Wire Shelf	4



3-Sided Frame

Wire Shelving Frames - Chrome

Model No.	Description	Ctn. Qty.
AW1836FRAME	Set of 2 - 3-Sided Frame 18 x 36	2
AW1848FRAME	Set of 2 - 3-Sided Frame 18 x 48	2
AW2436FRAME	Set of 2 - 3-Sided Frame 24 x 36	2
AW2448FRAME	Set of 2 - 3-Sided Frame 24 x 48	2

*Quick-Adjust Clips included with each handle.

Horizontal Shelf

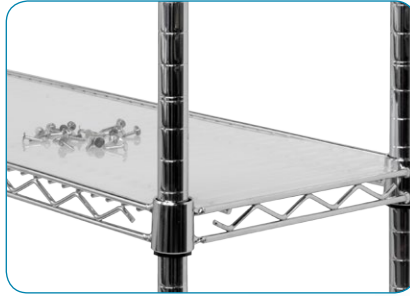
Wire Shelves - Chrome

Model No.	Description	Ctn. Qty.
AWS1224SHELF	12" x 24" Horizontal Wire Shelf	4
AWS1236SHELF	12" x 36" Horizontal Wire Shelf	4
AWS1248SHELF	12" x 48" Horizontal Wire Shelf	4
AWS1436SHELF	14" x 36" Horizontal Wire Shelf	4
AWS1824SHELF	18" x 24" Horizontal Wire Shelf	4
AWS1830SHELF	18" x 30" Horizontal Wire Shelf	4
AWS1836SHELF	18" x 36" Horizontal Wire Shelf	4
AWS1848SHELF	18" x 48" Horizontal Wire Shelf	4
AWS1860SHELF	18" x 60" Horizontal Wire Shelf	2
AWS1872SHELF	18" x 72" Horizontal Wire Shelf	2
AWS2424SHELF	24" x 24" Horizontal Wire Shelf	4
AWS2436SHELF	24" x 36" Horizontal Wire Shelf	4
AWS2448SHELF	24" x 48" Horizontal Wire Shelf	4
AWS2460SHELF	24" x 60" Horizontal Wire Shelf	2
AWS2472SHELF	24" x 72" Horizontal Wire Shelf	2
AWS3648SHELF	36" x 48" Horizontal Wire Shelf	2
AWS3660SHELF	36" x 60" Horizontal Wire Shelf	2
AWS3672SHELF	36" x 72" Horizontal Wire Shelf	2

Wire Shelving Components

Shelf Liner Mat

- 1 mm thick clear polypropylene mat keeps small items from falling through shelves
- Prevents dust accumulation on shelves below



Swivel Casters

- Create mobile shelving units and carts with these swivel caster sets
- Choose from 4" casters, 2 with brakes, 2 without, or 5" casters, all with brakes

Leveling Feet

- Levels shelving units on uneven surfaces

Steel Feet Immobilizers

- Provides extra stability to shelving units
- Allows shelving units to be secured to the floor

Donut Bumper

- Slides onto bottom of upright posts
- Add to mobile units to prevent them from damaging walls

"S" Hooks

- Allow for continuous runs of shelving or 90° angles
- Use two hooks per shelf

Quick-Adjust Clips

- For assembling shelves to posts

Post Clamps

- Attach two units together for extra stability

Shelf Liner Mat

Wire Shelving Shelf Liner Mats		
Model No.	Description	Ctn. Qty.
AW1224LINER	12" x 24" Shelf Liner	4
AW1236LINER	12" x 36" Shelf Liner	4
AW1248LINER	12" x 48" Shelf Liner	4
AW1824LINER	18" x 24" Shelf Liner	4
AW1836LINER	18" x 36" Shelf Liner	4
AW1848LINER	18" x 48" Shelf Liner	4
AW1860LINER	18" x 60" Shelf Liner	4
AW1872LINER	18" x 72" Shelf Liner	4
AW2424LINER	24" x 24" Shelf Liner	4
AW2436LINER	24" x 36" Shelf Liner	4
AW2448LINER	24" x 48" Shelf Liner	4
AW2460LINER	24" x 60" Shelf Liner	4
AW2472LINER	24" x 72" Shelf Liner	4
AW3660LINER	36" x 60" Shelf Liner	4
AW3672LINER	36" x 72" Shelf Liner	4



Caster Sets		
Model No.	Description	Pkg. Qty.
AWPCAST4	Set of 4 Casters - 2 w/Brakes 100 x 25 (4")	1
AWPCAST5	Set of 4 Casters - 4 w/Brakes 125 x 25 (5")	1



Leveling Feet



Steel Feet Immobilizers



Donut Bumper



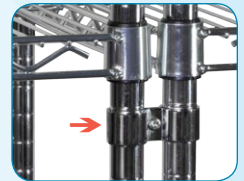
"S" Hooks



Quick-Adjust Clips



Post Clamps



Wire Shelving Accessories

Model No.	Description	Pkg. Qty.
AWFOOTLEVEL4PK	Set of 4 Leveling Steel Feet	4
AWFOOTPLATE4PK	Set of 4 Steel Feet Immobilizers	4
AWDONUT	Donut Bumper	1
AWSHOOK8PK	Set of 8 "S" Hooks	8
AWCLIP4PK	Set of 4 Quick-Adjust Clips	4
AWCLAMP2PK	Set of 2 Post Clamps	2

Wire Shelving Components

Wire Shelf Divider

- Create separated sections on shelves
- Keep stacks of items from falling over
- Durable nickel-chrome finish

Shelf Ledge

- Slides onto edges of shelves
- Prevent items from falling off the sides and back of shelving
- Great for carts and mobile units

Handle with Posts

- Create wire shelf utility carts
- Height of posts plus handle = 33"

Push Handles

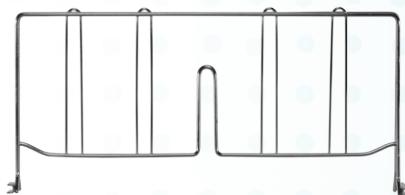
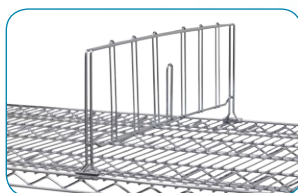
- Add a handle to easily push and maneuver mobile wire shelving units

Wall-Mount Shelving Brackets - Fixed

- Mount brackets directly to wall
- Use double wall brackets to make continuous runs of shelving
- Mounting hardware included (alternate hardware may be required based on mounting surface)

Wall-Mount Shelving Brackets - Adjustable

- Brackets attach to wall-mounted posts with 1" adjustment increments (posts sold separately)
- Use double post brackets to make continuous runs of shelving
- Weight Capacity (evenly distributed) per pair of brackets = 250 lbs.



Wire Shelf Divider

Wire Shelving Shelf Dividers - Chrome			
Model No.	Description	Installed Height	Ctn. Qty.
AWDIVER12	12" Wire Shelf Divider	7-3/4"	4
AWDIVER18	18" Wire Shelf Divider	7-3/4"	4
AWDIVER24	24" Wire Shelf Divider	7-3/4"	4
AWDIVER36	36" Wire Shelf Divider	7-3/4"	4



Shelf Ledge

Side & Back Shelf Ledges - Chrome			
Model No.	Description	Installed Height	Ctn. Qty.
AWLEDGE12	12" Wire Shelf Ledge	4-5/16"	4
AWLEDGE18	18" Wire Shelf Ledge	4-5/16"	4
AWLEDGE24	24" Wire Shelf Ledge	4-5/16"	4
AWLEDGE36	36" Wire Shelf Ledge	4-5/16"	4
AWLEDGE48	48" Wire Shelf Ledge	4-5/16"	4
AWLEDGE60	60" Wire Shelf Ledge	4-5/16"	4
AWLEDGE72	72" Wire Shelf Ledge	4-5/16"	4



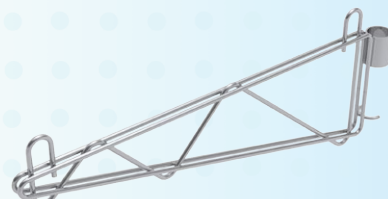
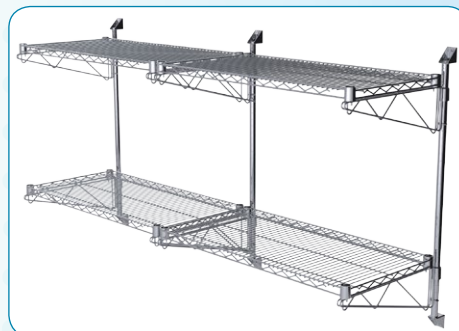
Handle with Posts



Push Handle

Wire Shelving Handles - Chrome		
Model No.	Description	Ctn. Qty.
AWUHD18	Handle with 2 Posts 18"	2
AWUHD24	Handle with 2 Posts 24"	2
AWPHDL18*	18" Push Handle	2
AWPHDL24*	24" Push Handle	2

*Quick-Adjust Clips included with each handle.



Single Post-Mount Bracket



Double Wall-Mount Bracket

Wire Shelving Wall Mounting Brackets - Chrome		
Model No.	Description	Ctn. Qty.
AW18SPBKT*	18" Single Post Bracket	4
AW18DPBKT*	18" Double Post Bracket	4
AW24SPBKT*	24" Single Post Bracket	4
AW24DPBKT*	24" Double Post Bracket	4
AW18SWBKT	18" Single Wall Bracket	4
AW18DWBKT	18" Double Wall Bracket	4
AW24SWBKT	24" Single Wall Bracket	4
AW24DWBKT	24" Double Wall Bracket	4

Wall mounting hardware included. Wire shelves sold separately. *Posts sold separately.

Universal Plastic Divider

- Attaches securely to Wire or Steel Shelving, or most steel cabinets
- Vertical dividers neatly separate hard-to-organize and oddly shaped items
- Pair with label holders to create an effective organizing system!
- Three sizes available

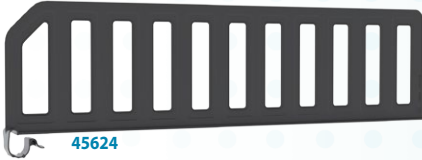
Wire/Steel Shelving Shelf Dividers - Plastic			
Model No.	Description	Installed Height	Ctn. Qty.
45612	12" Plastic Shelf Divider (Pk. of 6)	6	1
45618	18" Plastic Shelf Divider (Pk. of 6)	6	1
45624	24" Plastic Shelf Divider (Pk. of 6)	6	1



45612



45618



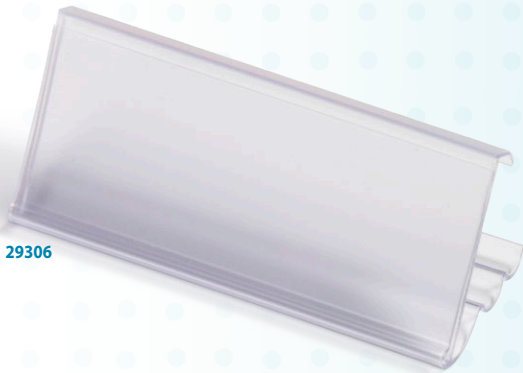
45624



Angle-Vu™ Adjustable Label Holder

No more climbing or bending to read or scan a label!

- The Angle-Vu snaps securely to the face of most existing wire shelving
- It allows the label face to be adjusted upward on low shelves and downward on high shelves for easy viewing and barcode scanning
- Perfect for 1:1 labeling used in 5S Lean initiatives
- The clear window protects the card stock label (provided)



29306

Angle-Vu		Dimensions (In.)		Total No.			
Model No.	W	H	Cards Per Sheet	Sheets Per Pack	Cards Per Pack	Label Holders	
29306	3	1-1/4	16	3	48	25	



Flat Label Holder



- Attaches to the face of wire shelving units
- Perfect for 1:1 labeling used in 5S Lean initiatives
- The clear window protects the card stock label (provided)



29308

Flat Label Holder		Dimensions (In.)		Total No.			
Model No.	W	H	Cards Per Sheet	Sheets Per Pack	Cards Per Pack	Label Holders	
29308	3	1-1/4	16	3	48	25	



Mobile Wire Utility Carts

- All-purpose utility carts with chrome finish. All components come ready to assemble in a **single convenient carton**. Shelves adjust in 1" increments. Cart height = 38-3/8"
- Units Include: 2 handle with posts, wire shelves with Quick-Adjust Post Sleeves, 5" swivel casters with brakes, 4 Donut Bumpers
- Choose from 2-Shelf or 3-Shelf units
- Optional Shelf Ledges and Shelf Dividers available



AWCART24363

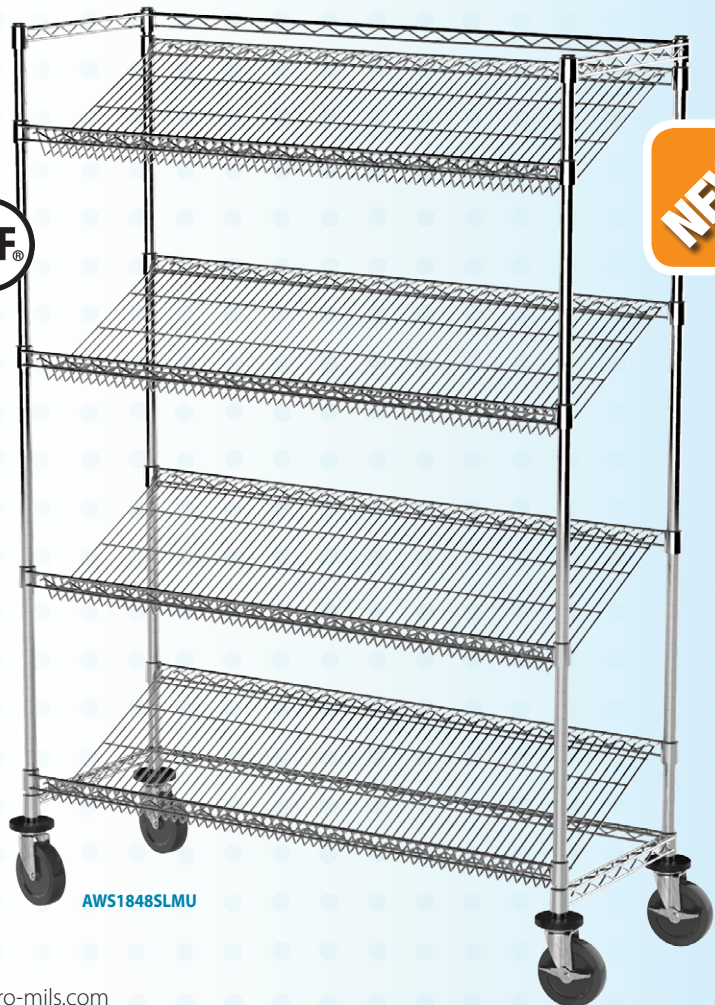
Mobile Wire Utility Carts				
Model No.	Description	Ctn. Qty.	Unit Weight	Weight Cap.
AWCART18362	18" x 36" 2-Shelf Cart	1	34	500
AWCART24362	24" x 36" 2-Shelf Cart	1	43.5	500
AWCART24482	24" x 48" 2-Shelf Cart	1	50	500
AWCART18363	18" x 36" 3-Shelf Cart	1	40	500
AWCART24363	24" x 36" 3-Shelf Cart	1	55	500
AWCART24483	24" x 48" 3-Shelf Cart	1	64	500



Mobile Slanted Shelf Starter Units

- Mobile Slanted Shelf Starter Units - Heavy-duty wire shelving units. Shelves adjust in 1" increments. Unit height = 68". Shelf Angle (installed) = 27°
- Units Include: 4 - chrome slanted wire shelves with Quick-Adjust Post Sleeves, 4 - posts with Leveling Feet, 2 - 3-Sided Frames, 5" swivel casters with brakes, 4 - Donut Bumpers
- Slanted shelves can create gravity-fed inventory systems
- NSF-Certified – Assurance that the shelving complies with strict standards for quality and safety

Mobile Slanted Shelf Starter Units		Components			
Model No.	Description	Post Qty.	Shelf Qty.	Unit Weight	Weight Cap.
AWS1836SLMU	18" x 36" Mobile Starter Unit	4	4	65	500
AWS1848SLMU	18" x 48" Mobile Starter Unit	4	4	78	500
AWS2436SLMU	24" x 36" Mobile Starter Unit	4	4	72	500
AWS2448SLMU	24" x 48" Mobile Starter Unit	4	4	87	500



AWS1848SLMU



Locking Louvered Carts

- Generous 6.5 cu. ft. of lockable storage space offers room to secure large or sensitive items such as expensive equipment, medical supplies and more
- Industrial-grade mobile workstation with a welded-steel frame and steel-reinforced butcher block work surface
- Available in two worktop sizes: 49" L x 24" W and 37" L x 18" W
- Made from 16-gauge steel with durable powder-coated finish
- Non-marking blue elastic rubber casters allow a weight capacity of 800 lbs.
- Ships fully assembled and ready to use
- Color: Textured Putty



MA4824PLD2



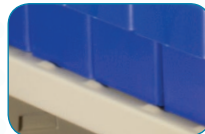
AkroDrawers®

Small Louvered Cart 37" L x 18" W x 36" H		Capacity/Qty.	
Model No.	Description	Wt. Capacity (lbs.)	Qty. of Drawers
MA3618PLD	Small Louvered Cart with no AkroDrawers	800	—
MA3618PLD1	Small Louvered Cart with 31118 AkroDrawers	800	6

Specify drawer color when ordering: Blue or Crystal Clear available with Putty Cart. Only one color per unit.

Large Louvered Cart 49" L x 24" W x 37½" H		Capacity/Qty.	
Model No.	Description	Wt. Capacity (lbs.)	Qty. of Drawers
MA4824PLD	Large Louvered Cart with no AkroDrawers	800	—
MA4824PLD1	Large Louvered Cart with 31142 & 31162 AkroDrawers	800	22 / 16
MA4824PLD2	Large Louvered Cart with 31142 & 31182 AkroDrawers	800	22 / 10
MA4824PLD3	Large Louvered Cart with 31112 AkroDrawers	800	16

Specify drawer color when ordering: Blue or Crystal Clear available with Putty Cart. Only one color per unit.



Raised barriers near shelf edges keep AkroDrawers from sliding out when cart is in motion



Louvered panels on the ends accommodate various sizes of AkroBins® or InSight® Bins



MA3618PLD1

Louvered Carts

- Industrial-grade mobile workstation with a welded-steel frame and steel-reinforced butcher block work surface
- Available in two worktop sizes: 49" L x 24" W and 37" L x 18" W
- Made from 16-gauge steel with durable powder-coated finish
- Non-marking blue elastic rubber casters allow a weight capacity of 800 lbs.
- Ships fully assembled and ready to use
- Color: Textured Putty

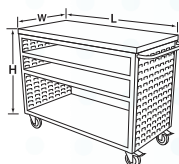


MA4824P1

AkroDrawers®



MA3618P1



Small Louvered Cart 37" L x 18" W x 36" H		Capacity/Qty.	
Model No.	Description	Wt. Capacity (lbs.)	Qty. of Drawers
MA3618P	Small Louvered Cart with no AkroDrawers	800	—
MA3618P1	Small Louvered Cart with 31118 AkroDrawers	800	6
MA3618PAST	Small Louvered Cart with 31168 & 31188 AkroDrawers	800	12 / 4

Specify drawer color when ordering: Blue or Crystal Clear available with Putty Cart. Only one color per unit.

Large Louvered Cart 49" L x 24" W x 37½" H		Capacity/Qty.	
Model No.	Description	Wt. Capacity (lbs.)	Qty. of Drawers
MA4824P	Large Louvered Cart with no AkroDrawers	800	—
MA4824P1	Large Louvered Cart with 31142 & 31162 AkroDrawers	800	22 / 16
MA4824P2	Large Louvered Cart with 31142 & 31182 AkroDrawers	800	22 / 10
MA4824P3	Large Louvered Cart with 31112 AkroDrawers	800	16

Specify drawer color when ordering: Blue or Crystal Clear available with Putty Cart. Only one color per unit.

ProCart™

- Versatile, all-purpose plastic utility cart
- Quickly move supplies through your facility
- Deep, molded-in compartments near the handle keep small items/supplies in reach
- AkroBins, 11" Deep Super Modular Cabinets, and Steel Storage Cabinets can be mounted under cart using a Rail System
- Dent-resistant, rust-proof, never needs painting



I-Beam post makes it easy to load and unload boxes on the lower shelf



Sides easily raise and lock in place during transport. Lower sides to load or unload shelves



Hinged side gates on both shelves flip up or down to convert the ProCart to a flat-top or box-top cart



30936



30936 with 19909 and 30224 plus 30906



30936 with 30234GREEN plus 30906



30936 with AD2311P62 plus 30902

ProCart		Dimensions (In.)			Ctn. Qty.
Model No.	Description	L	W	H	
30936	Large ProCart Structural Foam Utility Cart	45-5/8	24	34-3/4	1
30930	Small ProCart Structural Foam Utility Cart	41-1/2	19	34-3/4	1
30900	Small Cart 9-Rail System for AkroBins	—	—	—	1
30906	Large Cart 9-Rail System for AkroBins	—	—	—	1
30902	Large Cart 2-Rail System for Super Modular Cabinets	—	—	—	1



TiltView® Stack Cart

- Mobilize your supplies
- Fully assembled cart includes 3-Bin, 4-Bin and 5-Bin TiltView Cabinets
- Handles located at each end of cart
- Quiet, non-marking casters with total lock brakes
- Padded corner bumpers protect walls and doorways from damage

TiltView Stack Cart			Dimensions (In.)			Total Bin Cups
Model No.	Description	Cart Color	L	W	H	
TVSTACKCART	Cart with (2) 3 bin, (4) 4-bin and (2) 5-bin TiltView Cabinets	Beige	25-1/2	18-1/2	39-1/2	32



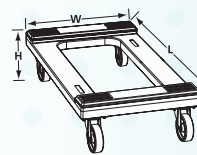
Polyethylene Dollies

- Perfect for moving large, heavy items
- Easy to clean, non-porous platform will not rot, mildew or splinter
- 4 bolt-on swivel casters for maximum mobility
- Available in 3 colors: Red, Blue, Black



Polyethylene Dollies		Dimensions (In.)				
Model No.	Description	L	W	Caster Type	Overall Height (In.)	Weight Capacity (lbs.)
RMD3018F4PN	Flush Polyethylene w/ Casters	30	18	4" Polyolefin	6-5/8	1200
RMD3018RC4PN	Padded Polyethylene w/ Casters	30	18	4" Polyolefin	7-13/16	1200
RMD3018FN	Flush Polyethylene w/o Casters	30	18	—	1-3/8	—
RMD3018RCN	Padded Polyethylene w/o Casters	30	18	—	2-1/2	—
RMD3018F4RX	Flush Polyethylene w/ Casters	30	18	4" Blue Elastic Rubber	6-5/8	1200
RMD3018RC4RX	Padded Polyethylene w/ Casters	30	18	4" Blue Elastic Rubber	7-13/16	1200

Specify color when ordering. AB=Blue, AR=Red, K=Black.



RMD3018F4PNAB with 39120 & 39170



LEAN

Benefits of 5S for Healthcare:

- Eliminate waste and redundancies
- Create extra workspace
- Tighten inventory levels
- Reduce inventory cost
- Color-coded sorting system

Convert your workplace to 5S Lean with innovative products from Akro-Mils!

Organizations that invest in a 5S process gain productivity, create a higher quality product and lower operating costs by simply implementing a system of waste removal, visual identification and efficient use of space.

What is 5S Lean?

5S Lean is a methodology to improve efficiencies and enhance operational excellence. These proven steps include:

1. Sort
2. Set In Order
3. Shine
4. Standardize
5. Sustain

For more information on 5S Lean visit:
<https://akro-mils.com/Resources/5S-Lean>



Before



After



Benefits of Kanban for Healthcare:

- Organization of supplies
- Stock is rotated to reduce expired supplies
- Reduces time to find supplies
- Gives time back to clinical staff for care of patients
- Reduce unnecessary inventory holding
- Major cost and time savings

How Kanban Works

Kanban is a highly effective method of managing inventory through the use of visual cues to alert when items need to be restocked. A Kanban system can be implemented using a two-bin system, a single-bin system, a side-by-side system, Kanban cards or indicator flags.

Two-Bin Kanban System

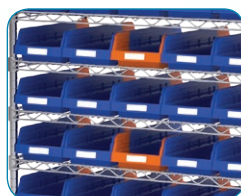
The most popular type of Kanban system uses two bins filled with the same item. The bins are placed on a shelf one in front of the other. When the front bin is empty, the nurse removes it and places it on the top shelf to show that the bin needs to be refilled. The rear bin is pulled to the front for picking. Once the empty bin is refilled, it is put behind the front bin so stock is rotated and items don't expire.



AkroBins®, see page 3.

Single-Bin Kanban System

A single two-sided bin with one end being a brightly colored stock "indicator" is used to hold supplies. A divider marks the minimum stock holding level. Once the primary stock is empty, the bin is turned around to reveal the brightly colored indicator side of the bin. This is a visual cue that the bin needs to be refilled.



Indicator® Bins, see akro-mils.com for more information.

Kanban Cards

Kanban cards are placed on storage bins with detailed information about what's in the bin (part number, barcode, etc.). Once the items in the bin reach a minimum stock level, the card is removed and deposited in a location to notify the materials manager to reorder that item.

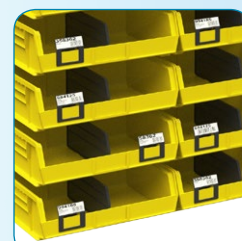


What is Kanban?

Kanban is Japanese for "signboard" or "billboard" and is a system for scheduling the movement of inventory through the use of visual indicators. Identifying when a supply container is empty and needs to be refilled is a crucial component of any inventory management system.

Side-by-Side Kanban System

Typically used when the bins are too large to place one in front of the other on shelving or when bins are hung from louvered panels rather than placed on shelving. Two bins can be placed side-by-side or a single bin is divided into two halves. One side is the primary stock, and items are picked from that side first. The other side is reserve stock, and a Kanban card or flag is placed in front of the bin to remind users to pick from the primary side first. Once the primary stock is empty, the card is removed from the reserve side to notify the materials manager to reorder that item.



Divider Label Tab, see page 9.

Indicator Flags

Indicator Flags remain at the bin location. Once the minimum inventory level is reached, the flag is raised to show that the bin needs to be refilled. This speeds up the reordering process by allowing the materials manager to quickly identify what needs reordered.



Kanban Extended Label Holder, see page 31.

For more information on Kanban solutions for Healthcare visit:
<https://akro-mils.com/Resources/Kanban>

Kanban Extended Label Holders

Transform your existing bins into a complete Kanban system

- Orange Kanban flag slides out to indicate bin needs refilled
- Works with AkroBins®, Shelf Bins, ShelfMax® Bins or 1800 Series AkroBins®
- Can be used with the large label area facing upward or downward for easy viewing and scanning
- Easy to retrofit existing bins to create a new system



Extended Label Holders

Model No.	Description	Ctn. Qty.
40411	Kanban Label Holder - works with 30210, 30220, 30232, 30242, 30224 AkroBins, 4" Shelf Bins®, 6" ShelfMax Bins	24
40412	Kanban Label Holder - works with all AkroBins except 30210, 30220, 30232, 30242, 30224, 30320; works with 1800 Series AkroBins	24
40410**	Standard Label Holder, no flag - works with 4" Shelf Bin®, 6" ShelfMax	24

**Does not work with 30110. **Not reversible for high shelf viewing.

Akro-Mils Products At Work



AkroBins paired with Louvered Panels.



AkroBins paired with Gray Louvered Panels.



Clear AkroBins paired with Beige Louvered Panels.



Super-Size AkroBins & AkroBins paired with Wire Shelving.



AkroBins paired with Gray Single-Sided Louvered Floor Racks on Dollies.



Clear AkroBins paired with Beige Double-Sided Louvered Floor Racks on Dollies.



akro-mils.com

1293 South Main Street, Akron, Ohio 44301 • Tel: 800.253.2467 • Fax: 330.761.6348 • sales@akro-mils.com
 In Canada: Ak-West, Inc. • Tel: 403-279-8940 • Fax: 403-225-1696 • sales@ak-westinc.com • ak-westinc.com